



Stirling Council
Schools, Learning and Education

CONSULTATION REPORT

**REPORT ON THE CONSULTATION RELATING TO THE PROPOSAL TO RELOCATE
CALLANDER PRIMARY SCHOOL**

December 2023

This Consultation Report has been issued by Stirling Council in accordance with the Schools
(Consultation) (Scotland) Act 2010

Contents

1	Proposal
2	Purpose of Report
3	Background
4	Pre-consultation
5	Consultation Process
6	Responses to Statutory Consultation
7	Analysis of Consultation Responses
8	Reponses to Areas of Concern Raised by Statutory Consultation
9	Summary of Education Scotland Report and Response
10	Alleged Omissions or Inaccuracies
11	Compliance with Section 9(1) of the Schools (Consultation) (Scotland) Act 2010
12	Legal Issues
13	Personnel Issues
14	Review of the Proposal
15	Conclusion
16	Recommendation

Appendices

A	Proposal Document
B	Minute of Public Meeting
C	Online Consultation Responses
D	McLaren High Parent Council Representation and Response
E	Written Representation and Response
F	Pupil Responses to Consultation
G	Education Scotland Report

1 Proposal

This Consultation Report has been prepared following the consultation on Stirling Council's proposal that:

- Callander Primary School is relocated from the existing school site of 6 Bridgend, Callander, FK17 8AH to a site adjacent to McLaren High School, Mollands Road, Callander, FK17 8JH;
- A Community Campus is created for Callander. This campus will support an education experience from 2 to 18 years and will include a specialist provision for children with complex additional support needs within a mainstream school setting.

Having had regard (in particular) to:

- Relevant written representations received by the Council (from any person) during the consultation period;
- Oral representations made to it (by any person) at the Public Meetings held on 18 September 2023;
- Education Scotland's report on the proposal.

2 Purpose of the Report

This is a Consultation Report prepared in compliance with the Schools (Consultation) (Scotland) Act 2010. The purpose of the Consultation Report is to:

- Provide a record of the total number of written representations made during the statutory consultation period;
- Provide a summary of the written representations;
- Provide a summary of oral representations made at the Public Meetings held on 18 September 2023;
- Provide a statement of Schools, Learning and Education response to those written and oral representations;
- Provide the full text of Education Scotland's report and a statement of Schools, Learning and Education response to this report;
- State how Stirling Council reviewed the above proposal following the representations received during the statutory consultation period and the report from Education Scotland;
- Provide details of any omission from, or inaccuracy in, the Proposal Paper and state how Stirling Council acted upon it.

This Consultation Report, together with any other relevant documentation, will be considered for decision by Stirling Council Children and Young People's Committee on 16 February 2024.

This Consultation Report is available from:

- Stirling Council Engage Platform (www.engage.stirling.gov.uk)
- Callander Primary School, 6 Bridgend, Callander FK17 8AH
- McLaren High School, Mollands Road, Callander FK17 8JH
- Callander Nursery, Mollands Road, Callander FK17 8JH
- Callander Library, South Church Street, Callander FK17 8BN

Copies can be requested by email via educ-comments@stirling.gov.uk

Please contact educ-comments@stirling.gov.uk to request this Consultation Report in an alternative format or translated into another language.

3 Background

The proposal to relocate followed a condition survey of the Stirling Council school estate during the summer of 2018. This highlighted Callander Primary School as a school in need of major investment due to its condition (rated B 'satisfactory' however identifying improvement works that required completion within 5 years) and suitability (rated C 'poor').

In November 2019, the Children & Young People Committee approved the preferred strategic solution to develop Callander Primary School on a site adjacent to McLaren High School.

This decision followed early consultation with key stakeholders which led to the conclusion that this site would realise the benefits of a Community Campus for Callander. This would include McLaren High School, Callander Primary School and Callander Nursery.

The project has secured an offer of grant funding from the Scottish Government through the Learning Estate Investment Programme (LEIP). Land has been purchased to ensure that the new Callander Primary School can be constructed immediately adjacent to McLaren High School and meets legislative requirements in terms of site size.

It is anticipated that the proposals will have a positive impact on the delivery of learning and teaching and the learning environment. The new facility of high quality, modern learning and teaching spaces will be flexible, functional and future proof, creating an inspiring and innovative learning environment, which will support the delivery of Curriculum for Excellence.

The close proximity of Callander Nursery and McLaren High School to Callander Primary School will maintain and enhance effective partnership working between the establishments, ensuring smooth transition between stages. Pupils will be provided with positive exposure to the wider campus along with safe spaces for different age groups. Similar Campus style provision for 2 – 18 year olds already exists within the local authority in Balfour, and provides a positive experience for all children and young people who attend each establishment.

Full background information, including the Educational Benefits Statement, can be found in the Proposal Document, attached as Appendix A.

4 Pre-consultation

In advance of the proposal being formalised, consultation took place with the Parent Council, through discussion at Parent Council Meetings, and with the wider community.

Workshops involving stakeholders including staff from Stirling Council, McLaren High School, Callander Primary School, McLaren Leisure Centre and the Loch Lomond and Trossachs National Park Authority focused on developing a vision and brief for the Primary.

This was followed by three design charrettes focusing on the site, core spaces and shared spaces, involving pupils, staff and parents.

This consultation process resulted in a vision of:

A vibrant, inclusive campus which supports a connected learner journey by enhancing opportunities with and for the community.

A campus which strengthens physical and digital links to promote accessibility, wellbeing and social connectedness, redefining existing assets to create a sustainable and resilient setting at the heart of the wider Callander community.

Six design options were tested and evaluated against the strategic objectives for the project. This process was then refined to three preferred options and more detailed site and building concept designs were developed. From this process a final site was selected which best aligns with the vision and strategic objectives for the Callander Campus.

A Pre-Planning Application Consultation on the proposals took place from April – June 2023. Two in person consultation events were held during this period and proposals were also published on the Engage Stirling platform to allow online consultation and comments to be captured.

5 Consultation Process

The Schools (Consultation) (Scotland) Act 2010, amended by the children and Young People (Scotland) Act 2014, sets out the statutory consultation requirements.

The statutory consultees for a proposal to relocate an education establishment are prescribed as follows:

- the Parent Council or Combined Parent Council of any affected school
- the parents of the pupils at any affected school
- the parents of any children expected by the education authority to attend any affected school within two years of the date of publication of the proposal paper
- the pupils at any affected school (in so far as the education authority considers them to be of a suitable age and maturity)
- the staff (teaching and other) at any affected school
- any trade union which appears to the education authority to be representative of the persons mentioned in bullet point above
- the community council (if any)
- the Community Planning Partnership (within the meaning of section 4(5) of the Community Empowerment (Scotland) Act 2015 for the area of the local authority in which affected school is situated.
- any other community planning partnerships considered relevant by the Authority.
- any other education authority that the education authority considers relevant
- any other users of any affected school that the education authority considers relevant

The consultation period for the proposal ran from 28 August 2023 until 11 October 2023. This period allowed for the statutory minimum of 30 school days.

To communicate, the Schools, Learning and Education proposal information was delivered through the undernoted media avenues:

- Stirling Council Engage Platform
<https://engage.stirling.gov.uk/en-GB/projects/callanderprimaryrelocation>
- Stirling Council social media sites
- Hard copies made available in Callander Library

Those who wished to provide a response by an alternative method than those outlined above, or who required the consultation in an alternative format were directed to educationenquiries@stirling.gov.uk or 01786 233185.

All interested parties were invited to submit their comments by close of business on Wednesday 11 October 2023.

A public meeting was held at Callander Primary School on 18 September 2023.

Minutes of the public meeting are attached as Appendix B.

6 Responses to Statutory Consultation

A total of 125 written responses to the Callander Primary School Relocation Consultation were received as follows:

- 121 online responses via Engage Stirling Platform
- 2 responses via email
- Responses from pupils of Callander Primary School and McLaren High School

No hard copy written representations were received during the consultation period.

7 Analysis of Consultation Responses

Online Responses

Online responses to the relocation consultation were gathered through Stirling's Engage Platform. There were 121 respondents to the consultation.

As shown in Figure 1 below 98% (117) of respondents were Stirling Council residents.

Figure 1: Are you a resident of the Stirling Council Area?

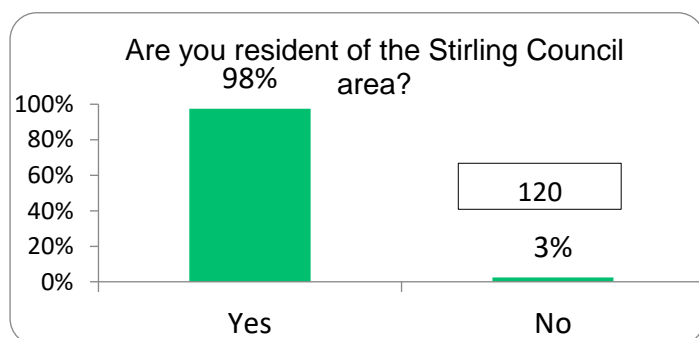
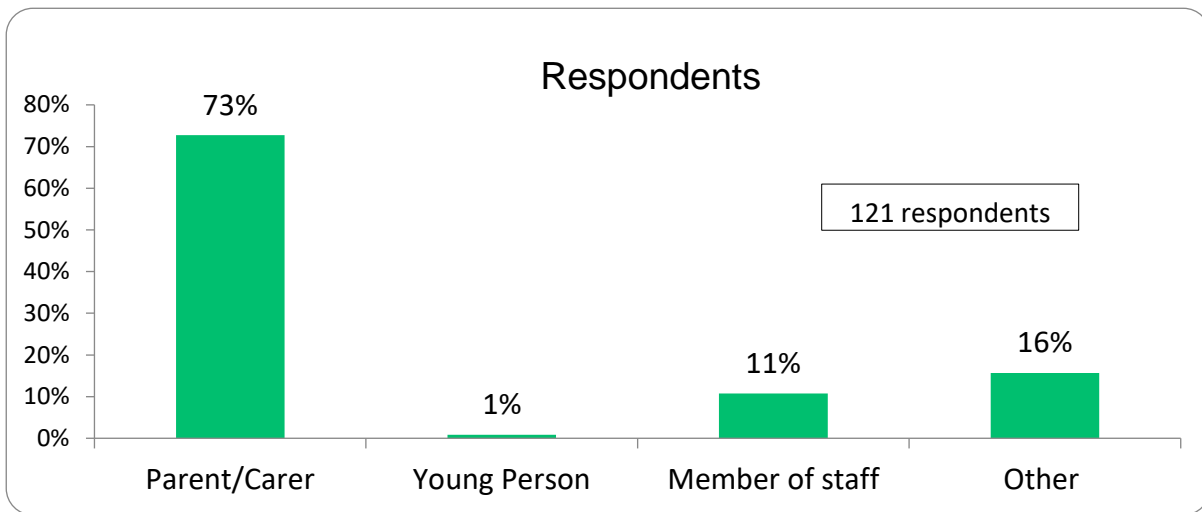


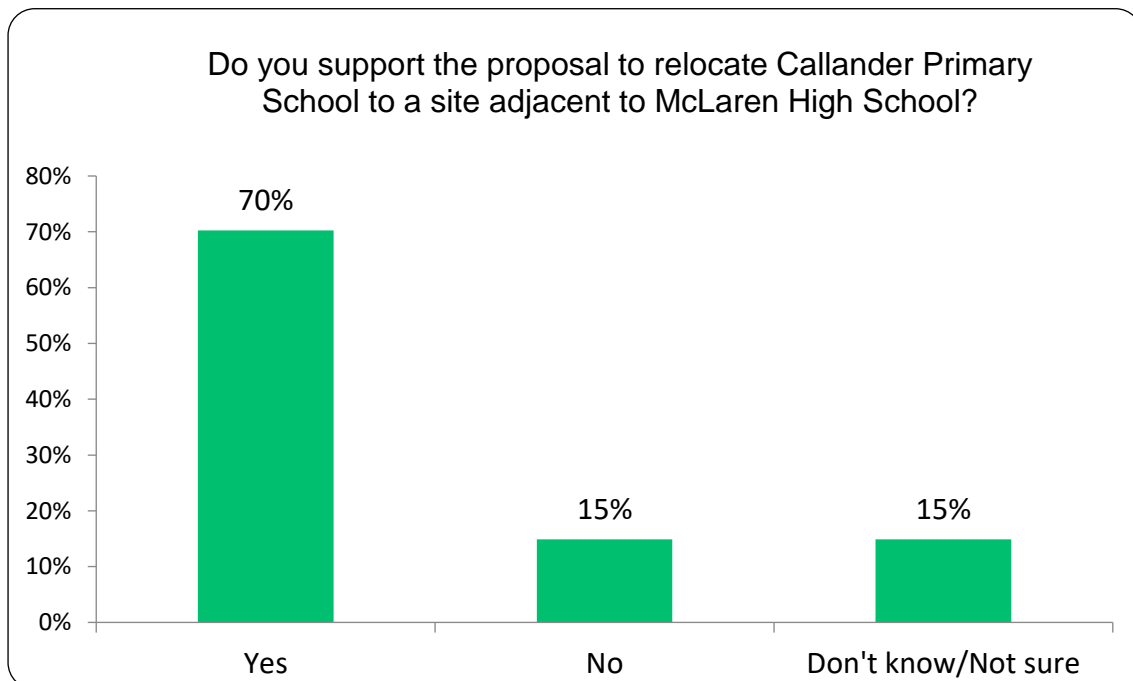
Figure 2 below shows the split of respondents by category type. Of those surveyed three quarters, 73% (88) are parents or carers whilst 11% (13) are staff members and one response from a pupil. The remaining 16% (19) of respondents are 16 local residents, 2 external agency staff and 1 parent of a high school pupil.

Figure 2: Respondent Type



Respondents were asked whether they supported the proposal to relocate Callander Primary School from the existing location to a site adjacent to McLaren High School. Figure 3 shows that most respondents to the survey, 85 (70%) said that they did support the proposal, 18 (15%) were against the proposal and a further 18 (15%) were unsure.

Figure 3: Do you support the proposal to relocate Callander Primary School to a site adjacent to McLaren High School?



Respondents who stated they are against or unsure about the proposed the relocation of Callander Primary School were asked to provide their main reasons. Figure 4 shows the split of responses by the 29 respondents. 24 responses (83%) cited concerns about the impact the relocation will have on limiting the amount of sports facilities and outdoor playing field space. 14 responses (48%) were concerned about the extra distance that pupils will have to travel. 7

responses (24%) were also concerned about the school footprint, while 7 responses (24%) mentioned the consultation process.

Figure 4: Reasons for being against relocation

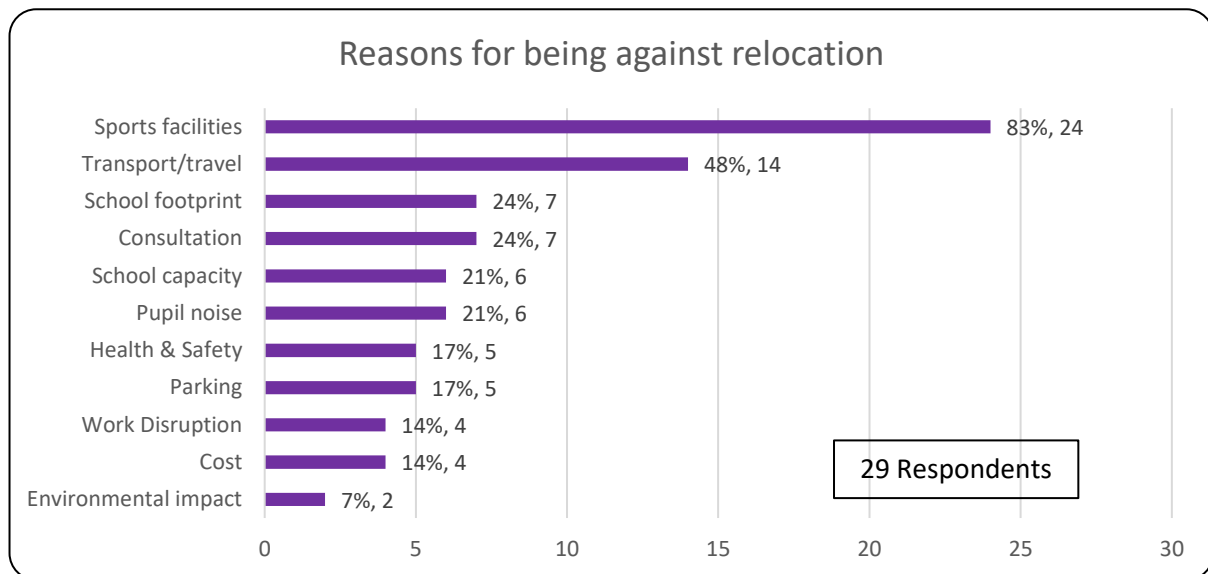


Figure 5 shows the topics that were highlighted when residents were asked for further comments, most respondents supported the idea but had some concerns. Topics highlighted were similar to those shown in figure 4 by respondents who are against the proposal. There were 69 respondents to this question.

Figure 5: Other Comments

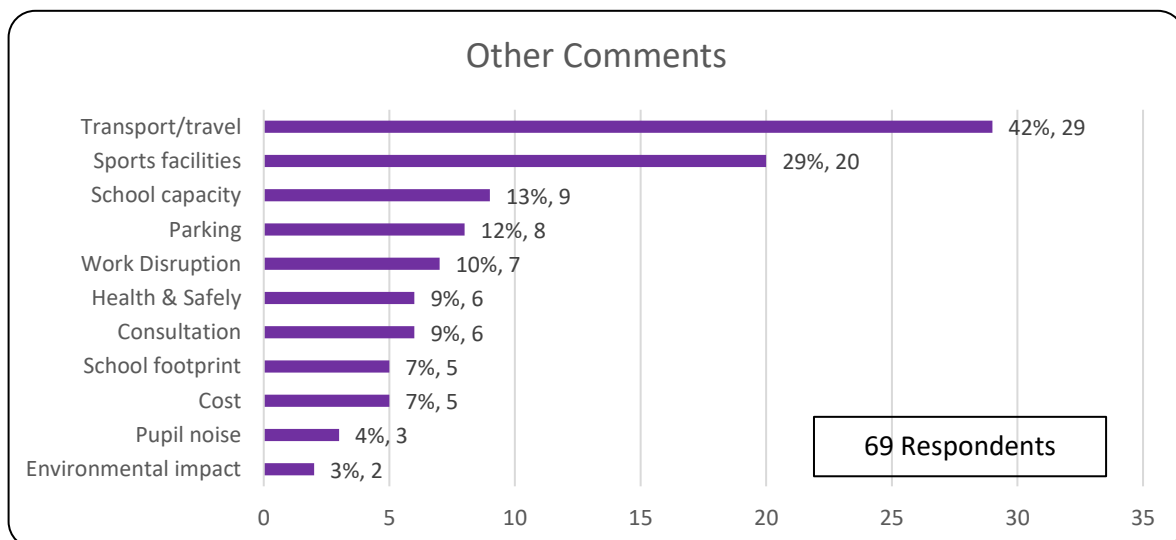


Figure 5 shows that 29 respondents (42%) were concerned with the extra travel that their children will have to get to school, with some mentioning desire within the community for another bridge to be built. Others mentioned the need for better traffic calming measures. 20 responses (29%) were concerned about the reduction of the sports fields and the impact this would have on their children. School capacity had 13 responses (9%), with residents worried that the new school would not have the capacity for children from any future developments within and around Callander.

Full details of the online responses are attached as Appendix C.

Email Responses

Two email responses were received regarding the relocation of Callander Primary School. The first responses came from McLaren High Parent Council, the second from a member of the community following the public meeting. The nature of these responses raise similar concerns to the online responses, namely school capacity, access to sports/PE facilities and disruption to high school pupils.

Full correspondence relating to the email responses received are attached as Appendix D (McLaren High Parent Council) and Appendix E (member of the community).

Responses of Pupils of Callander Primary School and McLaren High School

Views of pupils at both Callander Primary School and McLaren High School were gathered for the purposes of the consultation. Although McLaren High School pupil responses were received after the consultation had closed, they have been included in this report to ensure the views of all affected pupils have been recorded. An example of the comments is shown below:



Callander Primary School

"It will be great to have a new, modern building."

"It will be good to be with the nursery again and with the high school."

"It is exciting, I can't wait."



McLaren High School

"Concerned about the lack of space during the construction work for PE and sport."

"Hope that intervals and lunch times would be at separate times to ensure appropriate space for all pupils involved."

"Feel the primary school will add a community feeling to the school and that everything will be fine when the school is settled here and the pupils are on campus, it is just during the construction time there are a number of disadvantages to the Secondary School."

A full record of the pupil consultations are attached as Appendix F.

8 Responses to Areas of Concern Raised by Statutory Consultation

Responses to the Consultation share common areas of concern relating to the relocation of Callander Primary School. This section will respond to each theme in turn, and has already been made available via the Engage Stirling Platform:

Sports Facilities

The existing 3G pitch is not being lost – it is being moved south on the site (to where the existing under sized high school rugby pitch is located) to create an improved Central Plaza that will benefit the wider Campus. The relocated 3G pitch will benefit from a new 3G carpet to further extend its life and benefit all users. The 3G pitch is required to close fully for a short period at the commencement of the works (this is currently estimated to be up to 5 weeks) followed by a period where half the existing 3G pitch will remain available while we construct the new 3G. As soon as the new 3G is complete, this will be fully opened for use, well ahead of the handover of the new build primary school. We are working with the high school and primary school to look at ways they can relocate some PE to the existing grass pitch at the primary school during the period of works. We will work with local community users of the 3G to try to facilitate as many of the Club bookings as we can during the period of the works on the half 3G pitch.

The build includes the provision of a new area of flat amenity space that can be used by all Campus users for a variety of uses, including athletics. This grass area will be in the new land purchased to supplement the campus site so although the new 3G moves to where the existing rugby pitch is located, alternative areas of grass on the site are being provided.

The rugby pitch at the existing primary school will be retained and changing facilities provided to allow this valuable asset to be used by all education facilities as well as the Rugby Club and other community groups. Discussions are ongoing with the high school around how they can timetable PE to allow time for pupils to walk to the primary school pitch, change and get a meaningful amount of time for PE lesson.

Transport / Travel

The building work will enhance the network of paths already within the school/Campus, promoting active travel and the creation of a travel plan for the new site to promote active, safe and sustainable travel and improving the safety of all users. A new path will be created directly to the primary school site from Mollands Road, as well as the build providing additional car parking, new cycle parking and improved drop off facilities. Stirling Council's School Transport Policy will apply.

The Consultation recognises the community's desire for a pedestrian bridge and improvements to The Creep to assist walking routes to the new Campus. The design of the building work allows for connection points should the bridge be constructed in future. However, it should be noted that improvements beyond the school/Campus site are out with the scope of this project.

School Footprint

Land has been purchased to supplement the existing McLaren High School and Leisure Centre site to create the Campus site. While the primary school will be able to share the wider campus grounds and facilities, there are also dedicated primary school grounds within the site that will be fenced off to support security and staff supervision. These grounds will support external teaching and learning as well as play and will include hard standing, grass, soft landscaping, seating areas, the Daily Mile track etc.

Due to the new land that has been acquired to supplement the campus site, the high school does not lose out on external space – we will be improving the external space to create a connected campus. We will be improving the nursery grounds as part of the work scope – the current garden is a difficult shape to supervise and this is being addressed.

Consultation

The Consultation regarding the relocation of Callander Primary School has been carried out as legally required by the Schools (Consultation) (Scotland) Act 2010.

Prior to the formal consultation process, a 'pre-consultation' phase was carried out in various ways:

- Discussion with the Parent Council at Parent Council Meetings
- Workshops involving stakeholders including staff from Stirling Council, McLaren High School, Callander Primary School, McLaren Leisure Centre and the Loch Lomond and Trossachs National Park Authority
- Three design charrettes focusing on the site, core spaces and shared spaces, involving pupils, staff and parents.

This consultation process resulted in a vision of:

A vibrant, inclusive campus which supports a connected learner journey by enhancing opportunities with and for the community.

A campus which strengthens physical and digital links to promote accessibility, wellbeing and social connectedness, redefining existing assets to create a sustainable and resilient setting at the heart of the wider Callander community.

Six design options were tested and evaluated against the strategic objectives for the project. This process was then refined to three preferred options and more detailed site and building concept designs were developed. From this process a final site was selected which best aligns with the vision and strategic objectives for the Callander Campus.

A separate Pre-Planning Application Consultation on the proposals also took place from April – June 2023. Two in person consultation events were held during this period and proposals were also published on the Engage Stirling platform to allow online consultation and comments to be captured.

School Capacity

The new school will be built with a maximum build capacity of 317 mainstream pupils. This will be designed as 11 classroom model with additional breakout spaces, therefore making the new building larger and more flexible than the current one. This takes into account capacity required to accommodate forward roll projections including all known and approved LDP growth in the catchment area. There is scope to build an additional 2 classrooms should capacity require this in the future.

The ASN Provision will have capacity of 12 pupils in bespoke accommodation including 2 classrooms plus its own flexible use space, breakout rooms, toilets, personal care areas and storage. The Provision will have direct access to its own outside space.

Pupil Noise

Discussions are already underway with senior management at McLaren High School to find the

best possible solution regarding the management of noise throughout the build. This will be done in partnership with education staff and the contractors on site.

There is also a precedent at McLaren High School for managing pupil noise throughout the year, including during times of SQA examinations. McLaren High School has temporarily accommodated pupils from local primary schools during other building works, and with the nursery already in situ noise mitigations are already in place.

Parking

Additional car parking and drop off facilities are planned to supplement the existing car parking adjacent to McLaren Leisure car park. The number of spaces will be compliant with Planning and Building Regulations, and will include disabled car parking and electric car parking points.

Disruption / Health & Safety During Construction

Stirling Council recognises the disruption and challenges that a large infrastructure build can bring. The construction of the new primary school and wider campus improvements are being delivered through East Central Scotland Hub with Kier Construction appointed as the main contractor. Kier are an experienced national contractor who have delivered many similar education projects in live school environments. The contractor and project team are developing detailed logistics plans with health and safety as a key priority. As these plans develop, engagement will continue to take place with key stakeholders including the high school, the nursery and the leisure centre to ensure the works are fully planned and construction risk robustly managed.

Construction traffic will be kept far away from pupils. The construction route in will be via a temporary haul road being created to the south of the site which will be used by all construction parking. Construction worker's vehicles will be parked in the construction site and will not impact the existing car parking at McLaren Leisure Centre

The construction site will be fenced off around its full perimeter, with a gate manned during the contractors working hours to open up for legitimate site traffic/visitors. The site will be securely locked at all times.

Cost

At its meeting on 2 March 2023, Stirling Council approved a capital budget for the build of £2.301M in 2023/24 with indicative allocations of £16M in 2024/25 and £5.528M in 2025/26.

The project has secured an offer of grant funding from Scottish Government through the Learning Estate Investment Programme (LEIP) (Phase 2) with a revenue funding contribution of £8.749M paid over a 25 year period and conditional upon achievement of agreed outcomes.

Environmental Impact

As part of the planning process, a Screening Option was carried out in accordance with the Town and Country Planning (Environmental Impact Assessment) (Scotland) Regulations 2017. This states that prior to the commencement of the building work, an environmental aspect and impact assessment must be completed, which will assess a number of potential environmental impacts including emissions, ecology and biodiversity and waste generation.

LEIP (Phase 2) funding that has been secured towards this build is accompanied with strict sustainability requirements that must be upheld; for example, including targets on energy usage, heating and ventilation.

A dedicated primary school drop off point will be provided by the build however alternative modes of transport will be encouraged. New cycle/scooter storage will be installed and the walking network within the site will be enhanced by the development work. Each Stirling Council school should already have an active travel plan (known as a School Travel Plan) in place, which should be updated by school staff once the relocation is complete.

9 Summary of Education Scotland Report and Response

In line with the requirements of the Schools (Consultation) (Scotland) Act 2010, a report was provided by Education Scotland on the educational aspects of the proposal to relocate Callander Primary School.

The full Education Scotland Report is attached as Appendix G.

In preparing this report, HM Inspectors undertook the following activities:

- Attendance at the public meeting held on the 18th September 2023 in connection with the Council's proposal;
- Consideration of all relevant documentation provided by the Council in relation to the proposal, specifically the Educational Benefit Statement and related consultation documents, written and oral submissions from parents and others;
- Visit to Callander Primary School, including discussion with the relevant consultees.

Section 4 of the Education Scotland report summaries their findings and conclusions as follows:

"HM Inspectors agree that Stirling Council's proposal to establish a new primary school has clear potential educational benefits. The proposal addresses accommodation pressures due to the age of the current building. Children attending the new Callander Primary School will benefit from a modern, improved learning environment. The new school will help to promote creative and engaging teaching approaches and offer facilities that better support children's wellbeing and access to outdoor learning.

In taking forward the proposal, the council should provide further reassurance that the new school meets the demands of the local community in terms of roll capacity. They should consult further with young people and staff in relation to the transition period and repurposed green spaces. The council should continue to engage with stakeholders to ensure all children and young people can confidently access safe walking routes to the new campus. Finally, the council should consider how ongoing engagement and communication with key stakeholders ensures that all feel included and informed in the next stages of development."

Stirling Council welcomes the report from Education Scotland and accepts its findings. The points raised by Education Scotland within the Education Scotland report were also key themes identified through the consultation process and are addressed in this Consultation Report. The main points identified in the Education Scotland report for further consideration are as follows:

- *...the council should provide further reassurance that the new school meets the demands of the local community in terms of roll capacity.*
 - The Council has responded to this area of concern in feedback published following analysis of the consultation responses. This can be found in Section 8 of this report, and was made available on the Engage Stirling platform for members of the public

to view in November 2023.

- *They should consult further with young people and staff in relation to the transition period and repurposed green spaces.*
 - The Council's Link Officer for McLaren High School will be able to carry out further consultation with pupils to and staff to answer any further queries regarding the transition period and outdoor spaces.
- *The council should continue to engage with stakeholders to ensure all children and young people can confidently access safe walking routes to the new campus.*
 - The Council has responded to this area of concern in feedback published following analysis of the consultation responses. This can be found in Section 8 of this report, and was made available on the Engage Stirling platform for members of the public to view in November 2023. Any further information of significance regarding walking routes will be communicated with stakeholders.
- *...the council should consider how ongoing engagement and communication with key stakeholders ensures that all feel included and informed in the next stages of development.*
 - The Council is committed to ongoing engagement with all stakeholders. Further meetings with stakeholders and the wider community can be organised if demand requires.

10 Alleged Omissions or Inaccuracies

Section (10) (3) of the Schools (Consultation) (Scotland) Act 2010 also places a requirement on the Council to provide details of any inaccuracy or omission within the Proposal document which has either been identified by the Council or raised by consultees. This section of the 2010 Act also requires the Council to provide a statement on the action taken in respect of the inaccuracy or omission, or, if no action was taken, to state that fact and why.

The following inaccuracies or omissions within the Proposal document were either identified by the Council or raised by consultees during the consultation period:

- Following the end of the consultation period, there was a delay to the delivery timescales initially stated in the Proposal Paper. As such, the amended timescales are:

The planning application was submitted to the Loch Lomond & Trossachs National Park in December 2023, with works expected to commence on site in summer 2024, with completion/opening taking place late 2025.

11 Compliance with Section 9(1) of the Schools (Consultation) (Scotland) Act 2010

Section 9(1) of the Schools (Consultation) (Scotland) Act 2010 states that:

After the Education Authority has received Education Scotland's report, the Authority is to review the relevant proposal having regard (in particular) to:

- (i) Written representations received by the Authority (from any person) during the consultation period,*
- (ii) Oral representations made to it (by any person) at the public meeting,*
- (iii) Education Scotland's report.*

Following receipt and consideration of 125 written responses during the consultation period, the oral representations made at the Public Meetings, and Education Scotland's report, officers reviewed the proposal.

Relevant Officers within the Council's Schools, Learning and Education and Infrastructure Delivery Service teams considered the feedback from the consultation. This ensured that the Council met the requirements of sections 9(1), 12 and 13(3) (b) of the 2010 Act.

12 Legal Issues

The Council has complied in full with the requirements of the Schools (Consultation) (Scotland) Act 2010 throughout this statutory consultation.

The Council is mindful of its duties in respect of equality and the Equality Impact Assessment did not identify that any parent, child or young person would be treated less favourably as a result of this proposal.

Under the terms of the Schools (Scotland) (Consultation) Act 2010, it is a legal requirement that the Council should not reach any formal decision without having reviewed the relevant proposal having regard, in particular, to:

- Relevant written representations received from any person during the consultation period;
- Oral representation made to it by any person at the Public Meetings held on 18 September 2023;
- The Education Scotland report;
- Preparing a Consultation Report; and
- Waiting until a period of three weeks starting on the day on which this Consultation Report is published in electronic and printed form has expired.

It is the intention that this Consultation Report should be published, both electronically and in written form, on 21st December 2023. This meets the statutory requirement to publish this report more than three weeks before consideration of the proposal by Stirling Council.

13 Personnel Issues

All personnel currently employed in roles within Callander Primary School at its current location will transfer to the new school building upon its completion.

14 Review of Proposal

Following the period of statutory consultation on the proposed relocation of Callander Primary School, Schools, Learning and Education has reviewed the Proposal as follows:

- It has given due consideration to the oral representations made at the Public Meetings, and to all the written representations received from parents, staff and members of the Callander community. These have been summarised and responded to in this Consultation Report, and in a separate communication via Engage Stirling in November 2023;
- It has considered the points raised by pupils from Callander Primary School and McLaren High School, and taken on board Education Scotland's comments regarding further consultation to be carried out;

- Schools, Learning and Education has considered the content of the report by Education Scotland on the educational aspects of the Proposal and are reassured that current and future pupils of Callander Primary School are gaining from the educational benefits outlined in the proposal paper.

15 Conclusion

The Proposal regarding the relocation of Callander Primary School is being progressed due to:

- The condition survey of the Stirling Council school estate during the summer of 2018, which highlighted Callander Primary School as a school in need of major investment due to its condition (rated B 'satisfactory' however identifying improvement works that required completion within 5 years) and suitability (rated C 'poor');
- The Children & Young People Committee's approval of the preferred strategic solution to develop Callander Primary School on a site adjacent to McLaren High School, creating a Community Campus for Callander;
- Stirling Council approval of capital funding and securing LEIP grant funding from the Scottish Government towards the project.

The statutory consultation process was robust and provided an opportunity for stakeholders to identify key issues of concern. These issues have been fully considered and Schools, Learning and Education's response is detailed in earlier sections of this report.

Education Scotland provided a report on the educational aspects of the Proposal. The benefits identified by Education Scotland concur with those identified by Stirling Council as in the Proposal Paper, and recognise that current and future pupils of Callander Primary School will benefit in multiple ways from the new school building.

16 Recommendation

Therefore as a result of:

- The 2018 condition and suitability survey highlighting Callander Primary School as a school in major need of investment;
- The educational benefits, which will accrue from the Proposal to relocate Callander Primary School, which have been identified by Schools, Learning and Education and endorsed by Education Scotland;

Stirling Council therefore recommends that:

- Callander Primary School is relocated from the existing school site of 6 Bridgend, Callander, FK17 8AH to a site adjacent to McLaren High School, Mollands Road, Callander, FK17 8JH;
- A Community Campus is created for Callander. This campus will support an education experience from 2 to 18 years and will include a specialist provision for children with complex additional support needs within a mainstream school setting.

APPENDICES

APPENDIX A – PROPOSAL DOCUMENT

Schools, Learning and Education

Relocation of Callander Primary School Consultation

Schools (Consultation) (Scotland) Act 2010

Proposal – August 2023

1. Introduction

- 1.1 This proposal paper is being published in accordance with the Schools (Consultation) (Scotland) Act 2010.
- 1.2 The Schools (Consultation) (Scotland) Act 2010's principal purpose is to provide strong, accountable statutory consultation practices and procedures that local authorities must apply to their handling of all proposals for major changes to schools, including relocation.
- 1.3 The 2010 Act requires local authorities to prepare a proposal paper to set out the detail of the relevant proposal or proposals. An Educational Benefits Statement must be prepared and published within the proposal paper and should consider current and future pupils of any affected school, current users of its facilities, and the pupils of other schools in the authority's area; and also explain how the authority intends to minimise or avoid any adverse effects of the proposal.

2. Background

- 2.1 The proposals outlined in this document relate to the proposed relocation of Callander Primary School from 6 Bridgend, Callander, FK17 8AH to a site adjacent to McLaren High School, Mollands Road, Callander, FK17 8JH.
- 2.2 The Education (Scotland) Act 1980 requires Local Authorities to 'maintain and keep efficient every public school, . . . and other educational establishment under their management'.
- 2.3 The current Callander Primary School building was built in 1906-07 and was the local high school until the mid-1960s, when, following the relocation of McLaren High School, it became Callander Primary School. The school was refurbished and extended in 1992.
- 2.4 In November 2019, the Children & Young People Committee approved the preferred strategic solution to develop Callander Primary School on a site adjacent to McLaren High School.
- 2.5 This decision followed early consultation with key stakeholders, including the Parent Council, which led to the conclusion that this site would realise the benefits of a Community Campus for Callander to include McLaren High School, Callander Primary School and Callander Nursery.
- 2.6 The project has secured an offer of grant funding from the Scottish Government through the Learning Estate Investment Programme (LEIP). Land has been purchased to ensure that the new Callander Primary School can be constructed immediately adjacent to McLaren High School and meets legislative requirements in terms of site size.

- 2.7 In terms of sustainability and environmental impact, the proposed new facility will meet the guiding principles set out in 'Scotland's Learning Estate Strategy'. The building will be designed, constructed and operated to meet the challenging grant conditions required to secure LEIP funding over a 25 year period.
- 2.8 Consultation has taken place with the Parent Council, through discussion at Parent Council Meetings, and with the wider community. Workshops involving stakeholders including staff from Stirling Council, McLaren High School, Callander Primary School, McLaren Leisure Centre and the Loch Lomond and Trossachs National Park Authority focused on developing a vision and brief for the Primary. This was followed by 3 design charrettes focusing on the site, core spaces and shared spaces, involving pupils, staff and parents.
- 2.9 This consultation process resulted in a vision of:

A vibrant, inclusive campus which supports a connected learner journey by enhancing opportunities with and for the community.

A campus which strengthens physical and digital links to promote accessibility, wellbeing and social connectedness, redefining existing assets to create a sustainable and resilient setting at the heart of the wider Callander community.

- 2.10 Six design options were tested and evaluated against the strategic objectives for the project. This process was then refined to three preferred options and more detailed site and building concept designs were developed. From this process a final site was selected which best aligns with the vision and strategic objectives for the Callander Campus.
- 2.11 A Pre-Planning Application Consultation on the proposals took place from April – June 2023. Two in person consultation events were held during this period and proposals were also published on the Engage Stirling platform to allow online consultation and comments to be captured. The planning application will be submitted to the Loch Lomond & Trossachs National Park in September 2023, with works expected to commence on site early 2024, with completion/opening taking place in 2025.
- 2.12 The current optimum capacity of Callander Primary School is 254 pupils. The new building will have an increased optimum capacity of 276 pupils, in addition to capacity for 12 pupils within the Additional Support Needs provision. It is anticipated that this capacity will meet future capacity needs based on current projection models.
- 2.13 To meet statutory equality duties, the Council conducts an Equality and Social Economic Impact Assessment to assess policies to ensure compliance with legislative requirements. The outcome of the Equality Impact Assessment will inform the Final Consultation Report and the Council's consideration of the proposed changes prior to reaching a decision on whether they should be implemented.

3. Reasons for Formulating the Proposal

- 3.1 On 27 September 2018, The Children and Young People Committee considered a report on the condition of the Stirling Council school estate. This was based on a full condition survey undertaken over the summer of 2018, and in response to the revised Scottish Government Core Facts Guidance for Schools Condition Surveys issued in late 2017. The report provided a prioritisation list using the condition and suitability reports, with the outcome providing direction on future investment.
- 3.2 As part of this process Callander Primary was highlighted as a school in need of major investment due to its condition and suitability.

- 3.3 The condition rating for Callander Primary School is B. This is defined as 'satisfactory'. The current Condition Survey Report identifies a number of works requiring completion within 5 years.
- 3.4 The suitability rating for Callander Primary School is C. This is defined as 'poor: showing major problems and/or not operating optimally (school buildings and grounds impede delivery of services)'. There are suitability issues regarding spaces within the existing Primary School, including:
- Limited space in classrooms, social spaces and staff spaces
 - Restrictions on space impacting on the availability of space for sports activities/whole school events and assemblies
 - Environmental issues in relation to temperature, lighting and acoustics
 - The provision of toilet and cloakroom facilities
 - Accessibility issues for wheelchair users

Externally the playground space is inadequate for the whole school. Drop off and pick up facilities are restricted due to the location. There are limited parking facilities on site for visitors and staff and there are ongoing traffic management issues. The constraints of the listed building status, both internally and externally, also presents challenges.

- 3.5 The new school building will have a rating of A for both condition and suitability. In addition, as this is a LEIP funded project, it is a condition of the funding that the building performs to the required targets in relation to energy consumption.

4. Details of Proposed Changes

- 4.1 The proposal is to relocate Callander Primary School from the existing school site of 6 Bridgend, Callander, FK17 8AH to a site adjacent to McLaren High School, Mollands Road, Callander, FK17 8JH, forming a Community Campus for Callander. This campus will support an education experience from 2 to 18 years and will include a specialist provision for children with complex additional support needs within a mainstream school setting.
- 4.2 There will be no change to the catchment area or admission criteria for Callander Primary School as a result of this relocation.
- 4.3 Appendix 1 shows the location of the existing school and the location of the proposed relocated school.

5. Educational Benefits Statement

- 5.1 This Educational Benefits Statement considers the educational benefits should the proposal be implemented.
- 5.2 Current and Future Pupils
- 5.2.1 It is anticipated that the proposals will have a positive impact on the delivery of learning and teaching and the learning environment. The new facility of high quality, modern learning and teaching spaces will be flexible, functional and future proof, creating an

inspiring and innovative learning environment which will support the delivery of Curriculum for Excellence, further detail is provided below.

- 5.2.2 The campus will support an education experience from 2 to 18 years and will include a specialist provision for children with complex additional support needs within a mainstream school setting. This will ensure that children who require a higher level of specialist support are included within their local community area.
- 5.2.3 The close proximity of Callander Nursery and McLaren High School to Callander Primary School will maintain and enhance effective partnership working between the establishments, ensuring smooth transition between stages. Pupils will be provided with positive exposure to the wider campus along with safe spaces for different age groups.
- 5.2.4 The design of the new school will facilitate outdoor learning with class bases arranged in a linear fashion allowing direct access to outdoor learning areas. This will increase the range of outdoor learning opportunities available to pupils.
- 5.2.5 Arranged in groupings of two to three class bases, the proposed design will provide classes with activity/breakout areas, allowing a variety of pedagogical approaches to be utilised, for example, whole class teaching, pairs, groups or individual working, giving opportunities for learning through play, developing creativity and innovation and using technology. Children will also be able to work together across classes and stages which supports the development of relationships, especially where there are composite classes.
- 5.2.6 The specialist provision for children with complex additional support needs will have two class bases with associated break out and other facilities that have been designed to meet the needs of pupils with additional support needs, including direct access to their own garden space. Children with complex additional support needs (ASN) will have the ability to access a variety of inclusion opportunities within the mainstream school, if and when appropriate. Specialist staff will be able to plan alongside mainstream staff and support inclusion sessions, share expertise, provide peer support and build positive relationships, which will contribute to positive outcomes for all children and young people. This will benefit not only the young people with ASN but also mainstream young people, who will benefit from working alongside and getting to know others with a range of ASN, thereby gaining a greater understanding of the challenges faced by some of their peers and providing opportunities for all young people to develop skills for life, learning and work.
- 5.2.7 The specialist ASN provision will continue to have specialist staff, thus contributing to a growing expertise across the school in relation to additional support needs and inclusion. Closer links with the new specialist provision at McLaren High School, Katrine House, will be in place to support positive working relationships across the staff groups and positive transition experiences for children and young people.
- 5.2.8 Shared spaces within the School will be located centrally with maximum accessibility to serve different functions. The location of the dining area with the assembly/PE space will allow for the creation of a larger space for school events, and will be an effective setting for the diverse range of activities included within a Curriculum for Excellence.
- 5.2.9 There will be enclosed grounds with a range of facilities to enhance external learning and play opportunities. This will include areas of soft and hard landscaping, a Daily Mile track and play equipment. In addition, and as a result of being part of a wider Campus, the primary school will also have access to an all-weather 3G pitch, grass areas and a central Campus plaza to enhance the delivery of curriculum activities.
- 5.2.10 All facilities and learning spaces will be fully accessible to all pupils.

- 5.2.11 The provision of ancillary spaces such as pupil toilets and cloakrooms will be greatly improved.
- 5.2.12 Digital connectivity and resilience will equip the school for learning and teaching in the 21st century and beyond, where all classes can use a range of technology including Chromebooks and i-pads. Improved connectivity and future proofing will enable the school to adapt, innovate and provide children with transferrable skills for work.
- 5.2.13 No negative implications are anticipated for current and future pupils.
- 5.3 Parents and Carers
 - 5.3.1 It is recognised that for some families there may be an increase in the distance to travel to the Primary School. However, parents and carers with children attending both the Nursery and Primary will benefit from the campus location when dropping off/collecting children.
 - 5.3.2 Larger communal spaces and more flexible teaching spaces will enable parents to become more involved in the life and work of the school, attending a greater number of events, learning about and supporting learning and teaching in classes.
- 5.4 Current Users of Facilities/Local Community
 - 5.4.1 Callander Primary School is currently used by several School/Community Groups. It is anticipated that these groups could be accommodated within the new building and would enjoy the improved setting and facilities available to them. A new General Purpose room will be located close to the entrance to support out of hours events and activities.
 - 5.4.2 The basis of the Campus is to build an asset which delivers an inspiring learning space from 2 years to lifelong learning and a destination for sport and wellbeing. This will support wider benefits and key outcomes for Callander as a rural location as well as resulting in delivering a more joined up service to residents of Callander and the wider area.
 - 5.4.3 Opportunities for repurposing the existing Callander Primary School building will be considered in due course, involving Council services and wider stakeholders.
 - 5.4.4 No negative implications are anticipated for current users of facilities/the local community.
- 5.5 Staff and School Management Arrangements
 - 5.5.1 Callander Primary School will continue to be a defined education establishment with its own identity, management and staff structure.
 - 5.5.2 The proximity of McLaren High School and Callander Nursery to Callander Primary School will enhance opportunities for staff in all 3 establishments to work collaboratively.
 - 5.5.3 There will be improved facilities for staff and no negative implications are anticipated.
- 5.6 Other Pupils in the Council Area
 - 5.6.1 The improved external facilities will provide benefits to children attending Callander Nursery and pupils attending McLaren High School.
 - 5.6.2 It is anticipated that the relocation of Callander Primary School to the Campus will provide increased opportunities for work experience for pupils attending McLaren High School.
 - 5.6.3 No negative implications are anticipated for other pupils in the Council area.
- 5.7 Finance

- 5.7.1 At its meeting on 2 March 2023, Stirling Council approved a capital budget of £2.301M in 2023/24 with indicative allocations of £16M in 2024/25 and £5.528M in 2025/26.
- 5.7.2 The project has secured an offer of grant funding from Scottish Government through the Learning Estate Investment Programme (LEIP) (Phase 2) with a revenue funding contribution of £8.749M paid over a 25 year period and conditional upon achievement of agreed programme outcomes.
- 5.8 Travel & Transport
 - 5.8.1 Access routes into the new Campus site have been reviewed and improvements for both pedestrian and vehicular traffic are being progressed to promote safer routes to school. This will result in increased car parking provision and improvements to the layout and proposed flow of the existing car park as well as new pedestrian routes into the new Primary School being established to promote active, safe and sustainable travel and improving the safety of all users when compared to the current Callander Primary School site. There will also be cycle/scooter covered shelters and fully compliant disabled car parking provision.
 - 5.8.2 Active travel will be promoted and a travel plan will be developed for the new site.
 - 5.8.3 Stirling Council's School Transport Policy will apply.

6. Date of Change

- 6.1 Build is expected to be completed in 2025.
- 6.2 Pupil transition is expected to take place in 2025.

7. Consultation Process

The consultation process will be carried out in accordance with the Schools (Consultation) (Scotland) Act 2010 and a summary is shown below:

Process	Indicative Date
Consultation document issued to: <ul style="list-style-type: none"> a) the Parent Council or Combined Parent Council of any affected school, b) the parents of the pupils at any affected school, c) the parents of any children expected by the education authority to attend any affected school within two years of the date of publication of the proposal paper, d) the pupils at any affected school (in so far as the education authority considers them to be of a suitable age and maturity), e) the staff (teaching and other) at any affected school, f) any trade union which appears to the education authority to be representative of the persons mentioned in sub-paragraph (e), g) the community council (if any), h) the community planning partnership (within the meaning of section 4(5) of the Community Empowerment (Scotland) Act 2015) for the area of the local authority in which any affected school is situated, ha) any other community planning partnership that the education authority considers relevant i) any other education authority that the education authority considers relevant. 	28 August 2023
Consultation begins through the Engage platform.	28 August 2023
Promotion advising the public of the consultation and date of the public meeting.	w/c 28 August 2023
Public consultation meeting to be held on Monday 18 September at 6.30pm in Callander Primary School.	18 September 2023
Public consultation ends (6 weeks after the public consultation meeting, excluding school holidays).	8 October 2023
Report to Education Scotland on the outcome of the consultation.	6 November 2023
Response from Education Scotland on the outcome of the consultation.	November 2023
Consultation response report submitted to the relevant Committee or full Council as appropriate with final recommendations for consideration.	February 2024

8. Responding to the Proposal

[Engage Stirling](#) is the council's consultation and engagement platform. We now host all of our consultations and engagement projects in one place to make it easy for everyone to access all of our live consultations and petitions. This also ensures that we can provide easy to access updates so everyone can see how their views influence policy and practice within the council.

Engage Stirling is open to everyone over the age of thirteen. They can access Engage from any device and create an account by following the on screen prompts. Users are only asked to sign up once and when this is done, they can access all of our live consultations and petitions hosted on the site.

The consultation period will run from 28 August – 8 October 2023.

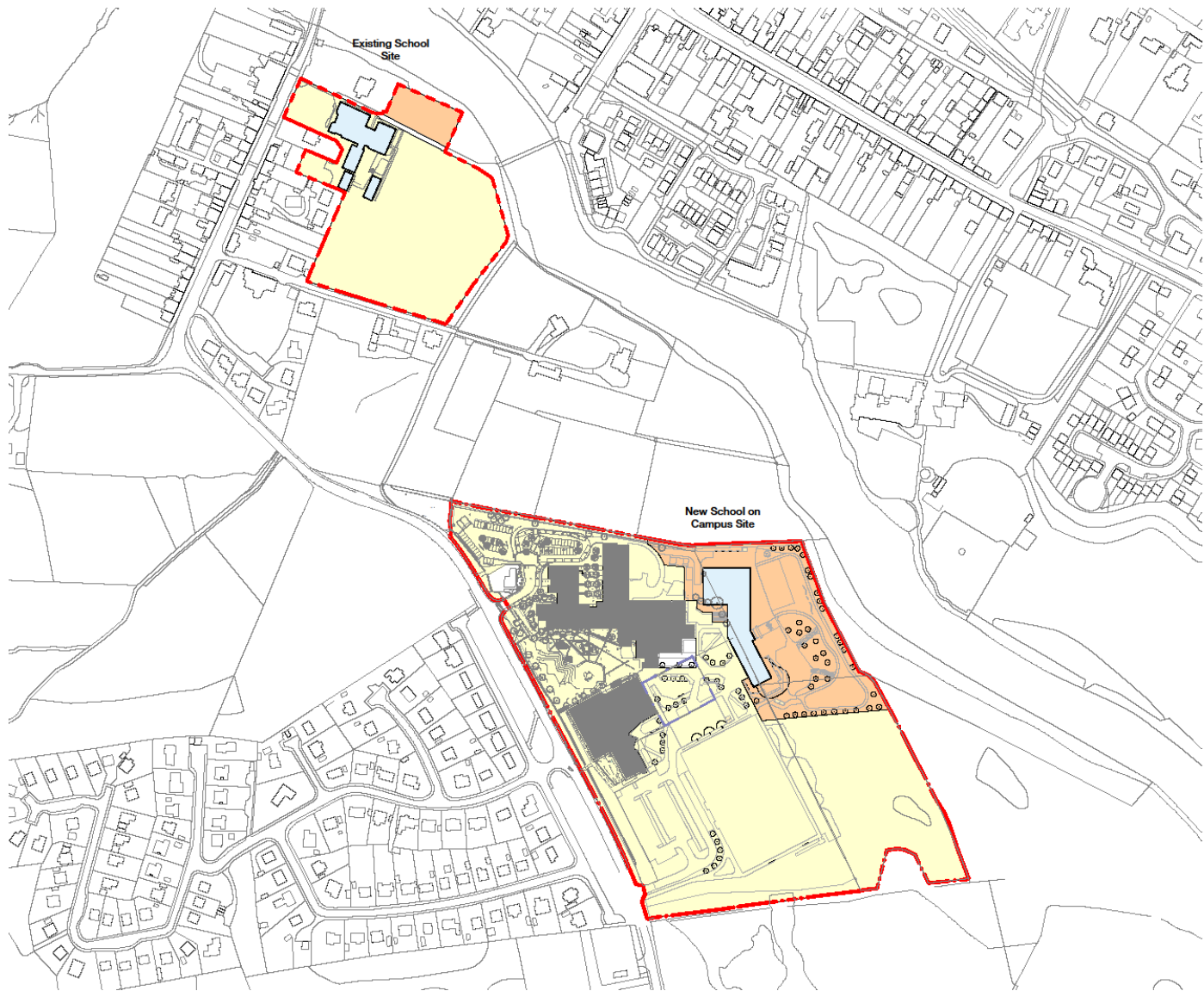
A public consultation meeting will take place on Monday 18 September 2023 at 6.30pm in Callander Primary School.

To submit a response using an alternative method please contact educationenquiries@stirling.gov.uk or call 01786 233185.

9. Data Protection

The information you provide in the survey will be treated as confidential and in adherence with the UK GDPR and Data Protection Act 2018. To find out more about your data protection rights and how we will use your data please see this [Privacy Notice](#).

Appendix 1 – Existing and Proposed Callander Primary School Locations



APPENDIX B – MINUTE OF PUBLIC MEETING

Minute of Callander Primary School Relocation Public Consultation Meeting Monday 18 September 2023, 6.30pm, Callander Primary School

In attendance from Stirling Council:

- Bryony Monaghan – Head of Education & Chief Education Officer
- Aileen More – Team Leader, Business Improvement; Schools, Learning and Education
- Tracey Henderson – Service Manager, Schools
- Carolann Morrow – Team Leader, Broad General Education
- Tanya Starkey – Headteacher, Callander Primary School
- Marc Fleming – Headteacher, McLaren High School
- Moyra McLaren – Supply SRO (minutes)
- Zoe Tetstall – Forward Planning Officer (minutes)

Meeting attendees:

23 members of the public –

- 10 parent/carers
- 1 young person
- 12 members of the community
- 1 Education Scotland attendee

Bryony welcomed the group to the meeting and staff from Stirling Council introduced themselves.

Bryony thanked everyone for attending the meeting and outlined the background to the project to relocate Callander Primary School and the consultation previously undertaken. It was highlighted that the current consultation was being held in accordance with the Schools (Consultation) (Scotland) Act 2010 with a focus on the educational benefits from the proposed relocation.

Bryony invited the group to share their views and ask any questions they had.

A member of the group asked if the design was fit for purpose and future proofed. It was confirmed that the new Primary building will have up to 11 teaching spaces (space for an additional 22 pupils compared to the current building) with the possibility of adding an additional 2 classrooms in the future if required. Bryony acknowledged the awareness in the community of past refurbishments to the school and how this may be in the forefront of people's minds when looking at the information regarding the capacity of the new school. It was noted that the process of projecting pupil numbers is carried out with great care and in consultation with the Loch Lomond and Trossachs National Park in relation to future build, using the data that is currently available.

An attendee asked if the projections were in line with the Local Development Plan which ran to 2022 or the one currently being drafted. Bryony confirmed they were in line with the current Local Development Plan.

Information was requested on the dialogue with the Loch Lomond and Trossachs National Park. It was confirmed that Stirling Council work in partnership with the National Park, with

due consideration given to all information shared between the parties pertinent to the build. The need for Stirling Council to work within affordability questions was noted.

Clarification was sought in relation to the pupils who could be accommodated in the ASN provision. It was noted that there are 2 developments currently taking place: at McLaren High School and in the Primary. The intention is to be flexible, meeting pupil needs. Pupils with the highest level of needs would be accommodated in the new ASN provision removing the need for pupils to travel. The needs of most young people would be met in mainstream education.

Bryony outlined that the concerns received to date in the online responses related to the capacity of the new building and development in the local area and suggested these as discussion points.

A member of the Parent Council outlined concerns in relation to capacity and access for pedestrians/cyclists to the new School. Bryony highlighted the importance of active travel and sustainability. It was agreed by all that a bridge from the other side of Callander would be an asset but it was highlighted that this is out with the remit of the Primary relocation project.

A member of the group outlined that the rugby club use facilities at the Primary and High School and raised concerns regarding the loss of facilities at the High School during the build phase, particularly in relation to the need to maintain children playing rugby during the build and in the future. It was noted these concerns would also apply to other sports. It was explained that additional land had been purchased to provide additional space at the new Primary. Tanya outlined the process currently underway with the Assets team to refurbish the current Sibcas unit into changing facilities. It was noted that the Pavillion provided suitable storage space but was not considered suitable as a changing facility.

An attendee expressed concern that the previous consultation focussed on providing for the Primary and not on the Secondary/community. Marc was asked how the High School would manage sports provision. Marc advised that discussions were already underway within the High School in relation to curriculum planning. It is likely there would be greater use of indoor facilities and facilities at the primary. Marc confirmed that curriculum plans are in hand and that national qualifications would not be affected.

Many of the questions raised/comments made related to matters out with the scope of the current consultation, which is focussed on educational benefits. These matters included:

- The new pitch facilities/provision of floodlights
- The design of the new school
- Car parking/flow of traffic
- The length of time the current pitch/AWP at the High School will be out of use
- The impact on the Leisure Centre - more detailed information would allow the Leisure Centre to look for alternative facilities
- The impact on community sports clubs and interim arrangements when the AWP/pitch is unavailable
- Concerns re the suitability of the current pitches
- The dates for works to take place
- Feedback from questions/concerns in the recent design consultation Consultation with Callander Community Council
- The impact on the community during the construction works and the limitations of the current infrastructure within Callander
- Who has been appointed as principal contractor

The significant consultation that has already taken place was noted and Bryony committed to feeding back the comments and concerns listed above to the Assets team.

An attendee noted that whilst a community campus is being created the focus is on the new Primary building. Bryony advised that the intention is to provide more for the community as a result of the creation of the Campus.

An attendee explained that whilst everyone wanted a new primary there were serious concerns and the best way to get a good project is to ask tough questions. Another member of the group explained that the new facility was wanted but it would be useful to have further input from Assets.

Bryony confirmed her commitment to take away any concerns raised for further follow up but also highlighted that this consultation was under the Schools (Consultation) (Scotland) Act 2010.

It was noted that education isn't only what happens in Callander Primary and there are concerns that clubs could fold (eg hockey and athletics) which it was felt would be bad for education. Bryony recognised that there would inevitably be some disruption but it was a priority to maintain facilities as much as possible.

The impact on adult clubs as well as children's clubs was mentioned. Bryony noted this.

Clarification was requested regarding the possibility of decanting to temporary accommodation. It was confirmed that pupils would move straight to the finished building.

An attendee asked if the ASN numbers were additional to the mainstream capacity. It was confirmed that the 12 ASN spaces were additional.

It was noted that the intention was that build would commence in 2024.

A brief discussion took place regarding Freedom of Information requests.

Bryony confirmed that answers would be provided to any questions raised online through the current consultation. The intention would be to provide this feedback through the consultation pages on the Engage platform. It was noted that a summary of the findings of the current consultation would be taken to the Children and Young People Committee for consideration by elected members.

An attendee noted that whilst everyone supports a new primary they didn't feel they were getting the full picture with insufficient information available on sports, the field at the current

Primary building, the future of the current building and when the planning application is being submitted.

Bryony advised that when any Council building becomes vacant, the Assets team would engage with the local community regarding future use.

Bryony confirmed that everyone accepts the need for a new Primary School and the need for sports facilities to be maintained and will feedback to the Assets team.

It was requested that this is not limited to the final design but also includes plans for the new field, the field at the Primary and how those will be managed. There were concerns there may be a lack of ambition for this.

Bryony explained that how connected assets are managed comes next; for now the priority is how to inform the development of a new Primary.

A further attendee stated it wasn't just external space. This project was costing a lot of money and they felt the bigger picture was not being looked at.

Bryony highlighted the importance of accessibility, inclusion and sustainability. Bryony invited comments from anyone who had attended previous consultation events above the development. One member of the group spoke about their experience of participating in a previous consultation event. Bryony explained that a progressive plan had been developed from the initial discussions and the proposal is exciting.

Tanya explained that the consultations so far were based on an end vision of a community campus with better indoor and outdoor facilities. From a Primary point of view, there will be improved facilities (for example a proper gym) which will also be available for community use. As part of the consultation with the High School, Primary School, Leisure Centre, parents and children, Tanya acknowledged that the concerns around the indoor and outdoor facilities has been raised and considered. Tanya expressed her hope for a flow between all the facilities at the community campus and can foresee this having a beneficial effect on the community as a whole.

Further concerns were raised regarding walking and cycling to the new School. Bryony confirmed that active travel is being planned and sustainability is important.

The issue of a crossing at the Mollands was raised. Aileen explained that this would be considered in the future and that the Safe Routes to school for the Primary and High School would be refreshed and that the headteachers of both schools involved in this.

It was recognised that a 'wonderful' new school was being built but concerns were raised regarding the narrow pavement/limitations of the 'Creep' as a walking route and the desire to make Callander a '20 minute place' without bridge access. The group was advised that a condition of planning would be the need to ensure a safe route to school. The need to re-route buses was highlighted by a member of the group.

Discussion took place regarding the potential provision of a bridge from Lagrannoch. An attendee asked that any future bridge provision is not considered the only safe route to the new school.

Further concerns were raised regarding a safe route to the new Primary and also the current Nursery. Aileen explained that routes are assessed on the assumption that children are accompanied by an adult. The difficulty of walking with multiple small children and the lack of accessibility to the Main Street from the High School for wheelchairs was further discussed. Bryony confirmed that the concerns being expressed were being noted. It was recognised that children will travel a range of distances and have varying personal circumstances.

Confirmation was requested that the new primary building will definitely be constructed. Bryony confirmed that decision had already been taken and that the new build is scheduled to happen as there is agreement about the need given the condition and suitability of Callander Primary.

An attendee outlined her experience of the previous refurbishment at Callander Primary School, along with the increase in size in Callander, the inclusion of children from Brig o Turk and the increase in social housing impacting on the available space in the current school. Bryony confirmed that future proofing is built into the projections but plans must also be financially viable.

The number of children generated from new housing was briefly discussed.

Bryony noted that the issue of Callander Primary School had been discussed for some time and there are further issues due to its listed building status. However, a point has now been reached where we have a real solution and whilst there are a number of concerns there is also a positive way forward.

The requirement to have an educational consultation was highlighted by Bryony. The positive feedback surrounding the new primary building was noted and Bryony confirmed she would take back the concerns raised that are out with the current consultation.

Tanya advised that the relocation of the Primary is a standing item at the Primary Parent Council meetings and further information will continue to be shared at these meetings. Parents were encouraged to attend future Parent Council Meetings. Updates will also be provided to the High School Parent Council.

It was noted that some attendees do not have children at either school (so would not attend the Parent Council meetings) but have a huge vested interest in the project. Bryony agreed to feed this back.

The feedback received from Callander Primary School pupils and their involvement in the design process was outlined to the group, such as their involvement in plans for the ASN provision and lighting within the school.

One attendee felt that there were fewer education related questions due to the provision of information as part of the current consultation.

An attendee asked about the accessibility of the outdoor facilities at the new Primary, such as the track and trim trail. Bryony confirmed that accessibility to the community was one of the principles the project was built around.

It was felt it would have been useful to have feedback from the previous consultation prior to this meeting as it might have saved some of the questions asked.

Bryony encouraged attendees to complete the online consultation process and thanked everyone for attending.

APPENDIX C – ONLINE CONSULTATION RESPONSES

Are you resident of the Stirling Council area?	Are you responding as a:	Are you responding as other? Please state:	Do you support the proposal to relocate Callander Primary School from the existing location of 6 Bridgend, Callander, FK17 8AH to a site adjacent to McLaren High School, Mollands Road, Callander, FK17 8JH?	If no, please give your reasons	Reason 1	Reason 2	Reason 3	Are there any further comments on the proposal you would like to make?
Yes	Parent/Carer		Don't know/Not sure	Worried about the long term impacts it will have on sports fields for the children. This is not addressed at all in the proposal	It has not been made at all clear in the project document what the short and long terms impacts on the secondary school present	It seem s lot of money and expense to end up with just a greater capacity of 22 students. That doesn't seem very "future proof".	A fuller indication of how the plans will impact the present footprint of the high school and the McLaren sports centre would be very much appreciated so we can make informed comments on the proposal to relocate. This may have bene	

				document that I can see.	facilities will be, which does not seem very honest.		covered in earlier consultation rounds but as new parents to McLaren High, this process has not been on our radar until this present school year. An information pack to bring new people to the area or new school parents would be very helpful with an honest outline of how long the building work is likely to take, what the short term impacts will be during building and what the long term impacts will be post building in terms of sports facility availability.
Yes	Other (please specify)	Resident	Yes				
Yes	Other (please specify)	Resident	Yes				
Yes	Other (please specify)	Parent Teachers Association Representative	Yes				These will be e-mailed

Yes	Parent/Carer		Don't know/Not sure	I have not seen the business case.	The disruption to the high school sports facilities have not been properly recognised or mitigated for the build period.	I understand the school will be left with less than the statutory amount of outdoor facilities for sport and it is unclear on what basis that non compliance has been rebutted.	The disruption for the build period is likely to be significant and I am not convinced enough has been done to mitigate this and the resultant impact on sporting activities and physical education for our young people who are likely to have at least 18-24 months (realistically) of disruption. Perhaps more importantly, I understand the residual outdoor space for sports and physical education will be less than that required by statute. I have not been able to find a proper analysis of expected usage, linked to pupil role etc, compared to the final space and facilities that will remain of realistic use. There has been reference to pieces of residual land but it is
-----	--------------	--	---------------------	------------------------------------	--	---	--

							unclear how useful these will be for young people, their clubs, and teaching. References to the use of the current primary fields ignores the fact this is a lengthy walk for pupils and will result in less teaching time, which will be to pupil detriment.
Yes	Other (please specify)	Local Resident	Yes				Traffic will no doubt increase in this area with many more vehicles returning to the Main Street when dropping off and picking up. Could consideration be given to the traffic lights changing for longer to allow traffic accessing the Main Street from the road to the school. Also could consideration be given at this time to a filter light on the traffic lights when turning right from the Main Street heading

							to the school. This causes issues at busy times of day currently and may well become more of an issue when the school is built.
Yes	Parent/Carer		Yes				
Yes	Parent/Carer		Yes				This education consultation strikes me as being rather late. The design for the school has already been developed to the point that it is now ready to be submitted for planning. Any feedback from the consultation will be unlikely to make a difference to the design as it currently stands. In terms of the public meeting held on the 18th September, it was not made clear that the intention of the meeting was to solely discuss the education provision. The

							<p>previous wider consultation process had not been completed and a lot of questions raised by the public have so far gone unanswered. This lead to a very frustrating meeting in which the public energy was that of frustration. However, there is overwhelming support for the new school, the community are just frustrated at the consultation process this far appearing to be one sided with community comments not being responded to. My children will be going to the new school and we're all so excited that our children will benefit immensely from the new and vastly improved provisions of the existing primary school.</p>
--	--	--	--	--	--	--	--

Yes	Other (please specify)	Previous parent	No	I have heard that the proposal will destroy / remove the 4g playing pitch only comparatively recently installed using lottery money and is regularly used. This would be an incredulous decision to make for a town not overflowing with facilities for young and old to use.			Why not extend the current school & refurbish the current building? There is land behind the school to extend, so I'd have thought that would be a cheaper option than building a whole new school. If it is not possible to extend, then I agree it should be relocated, but not to a site that is going to destroy limited facilities in the town. There is a field next to the 4g pitch - why can;t that be used or find another suitable piece of land in Callander, it doesn't have to be next to the High School, although I can see the advantages of being near it and the leisure centre.
Yes	Other (please specify)	Member of community providing rugby to the kids	Yes				Would like assurance that adequate sporting facilities will be maintained during the build and expanded

							on current provision after the build. Extensive consultation with local sports clubs is required to assure the provision in the future is beyond adequate.
Yes	Other (please specify)	Concerned resident	No	The earlier consultation demonstrated a flawed and potentially dangerous site layout	The disruption to existing site users and potential hazards of obstructing traffic seem to have been inadequately considered	The proposed site includes land not assigned to the High School.	Will there be feedback on the current proposal and further consultation before a planning application is made?
	Parent/Carer		No	Not a lot of space at new school	Primary school shouldn't be near High school with all swearing	Poor kids walk far to get to school	
Yes	Other (please specify)	Resident of local area with primary age children who may attend.	Yes				I hope it will be built for capacity. So many new schools end up too small soon after opening.
Yes	Parent/Carer		Yes				

Yes	Parent/Carer		No	New PS isnt showing capacity for future house building	Havent been told what will happen to old PS	PS doesnt have to share playgrpund currently	Many parents dont walk kids to school currently, this move will encourage further use of cars at peak times. Resulting in more pollution, less physical exercise for pupils and traffic congestion
Yes	Parent/Carer		Yes				
Yes	Other (please specify)	Local resident	Don't know/Not sure				The school is fine in principle, but it should only be allowed to open once a new pedestrian bridge has been built and opened in the south-east part of Callander. If this long-awaited and long-demanded bridge is not installed, children living north of the river in this part of the town will have a much longer journey along the busy main road to get to school. A new bridge will reduce journey times by foot, enhance safety and encourage more parents to

							forego the school run to allow their children to travel to and from school by foot.
Yes	Parent/Carer		Yes				Concerns regarding increased traffic on Bridgend both during construction and afterwards!
Yes	Other (please specify)	Interested Resident	Yes				
Yes	Parent/Carer		Yes				I'm concerned about the planned move of the 4g pitch and the impact this will have on the provision of PE to the high school. The majority of the cost of the pitch was covered by the high school parent council and PTA with lots of hard work to provide such a good facility.
Yes	Parent/Carer		Yes				
Yes	Parent/Carer		Yes				
Yes	Parent/Carer		Yes				don't forget the bridge!
Yes	Parent/Carer		Yes				

Yes	Other (please specify)	Local to callander	Yes				
Yes	Other (please specify)	Resident	Don't know/Not sure	Location	Use of space	Sports centre over utilised	Traffic
Yes	Parent/Carer		Yes				
Yes	Parent/Carer		Yes				If school is going to be relocated, there needs to be easier access to the school. If you live at the beginning of callander it's a very long walk to get to and from the school, so a possible bridge to get over to the school would be good also
Yes	Other (please specify)	Stirlingshire resident	Yes				Avoid the use of gas as the primary heat source. De-carbonise and utilise waste-water or the Teith as a water-source to meet the current demand and future-proofing for heating needs.

Yes	Member of staff		Yes				That mistakes of the past are not repeated, that the building is future proof by allowing for extra capacity. I have lived in Callander my whole life, I was at C.P when it was refurbished in 1992/3, I only got 6 months in building before starting high school. As NC and HNC student I returned on placements, in 6 years it was already over crowded and lacked teaching space! Our current depute teaching p1 in open area with room dividers!!! I returned 9 years ago as a member of staff, my 1st year I discovered that for 6 years the building had been considered 'not fit for purpose' by local authority. For 15 of the 30 years of it's refurbishment it has
-----	-----------------	--	-----	--	--	--	---

							<p>been unfit and at what financial and educational cost to the authority, staff and children of Callander? Please invest in the long term, 50, 60 years so my grand children and great grand children do not face the same challenges as myself and my children.</p> <p>Outdoor space concerns me, the outdoor space we currently have is fantastic and I am eager outdoors is held in same estimate.</p> <p>Safe and faster walking routes from far end of town or problems with traffic and parents dropping off in unsustainable places will continue.</p> <p>Walk with young child from ceremony takes 35 to 45 minutes.</p> <p>My own son has high functioning ASD and the poor location of</p>
--	--	--	--	--	--	--	---

							<p>the current pedestrian crossing (Doctor surgery between 2, entrances) means that 12 he is still unable to walk independently to highschool from far end of town. Safe routes MUST be addressed for inclusion of all. The dinning hall being big enough to seat all children at a table at one time, to avoid the current staggered lunches, with older children sitting on benches or floors with lunch balanced in laps. A selection on small and private spaces where visiting professional can work with our young people with dignity and respect. Sufficient toilet and changing facilities for after gym. Proper 1st aid room for sick or injured children to stop them having to</p>
--	--	--	--	--	--	--	--

							sit in communal areas or busy school office.
--	--	--	--	--	--	--	---

Yes	Parent/Carer		Yes				That proper consideration given to how children from the opposite end of the town get to school safety. I a long walk from McLaren Terrace/finglas gardens, many dangerous road crossing, current sight of pedestrian crossing for children in McLaren Terrace, Robertson way still involves crossing petrol station, 1 scheme entrance then another very busy entrance at doctor's surgery, with emergency vehicles and council yard traffic. Can speed restrictions be brought further out? New pedestrian crossing be added? Will footbridge promised 20+ years ago when finglas gardens build ever be put in place to reduce
-----	--------------	--	-----	--	--	--	--

							walking time to school, especially in bad weather.
Yes	Other (please specify)	Parent of McLaren HS	Yes				Please make sure that grounds are left for McLaren Rugby club as current plans do not support this. It is a really important local community asset
Yes	Member of staff		Yes				
Yes	Parent/Carer		Yes				
Yes	Parent/Carer		Yes				
Yes	Parent/Carer		No	It will take away space from the existing nursery and high school site, high school outdoor space is already limited and would benefit from further	The local community makes use of the outdoor space around the high school and leisure centre, to remove this limits community		

				development to encourage better and more diverse high school extracurricular activities	participation in activities.		
Yes	Other (please specify)	Grandparents	Yes				Has any consideration been given to the increase in traffic on Bridgend during the building phase and after?
No	Member of staff		No	Loss of grass pitch which is a vital resource to the school PE department with a growing school role (High school, Katrine house, nursery and primary school) we will have less resources as we don't have full access to the Leisure centre during	Disruption to examinations due to noise pollution coming from building works/ primary play ground.	Car park at the leisure centre regularly floods and with increased pick up/drop off there will be no spaces or increased risk of damage to cars with pupils getting in and out vehicles during pick up times. Parking will	I feel we are losing out as a high school. We are creating a more cramped school due and losing facilities - losing grass pitch and having to share Astro and games hall at leisure centre which are already difficult to book. I think the primary school should be built on the protected grass area at the current primary school and the protected land should switch to the rugby pitch at the high

				<p>the school day. Whilst the works are happening we will lose the astroturf which will negatively impact the pupils who have already missed physical activity during COVID due to living in remote areas with no astroturf etc. It also means we will never be able to have a sports day/ teach athletics/ do rugby training/ have any rugby home games again. This will also impact central athletics and</p>		<p>be forced to be in local areas which will be disappointing to residents.</p>	<p>school. The primary pupils deserve a new primary school with excellent facilities and links to the high school but I fully believe this is not suitable in the proposed location.</p>
--	--	--	--	---	--	---	--

				McLaren Minis as well.			
Yes	Parent/Carer		Yes				<p>The primary concern associated with this project revolves around its overarching plans. The lack of available playing fields resulting from these plans stands to adversely affect not only our children but also numerous others engaged in sports or physical activities over the years to come. This oversight, if not resolved quickly, will undoubtedly have a substantial impact on our community's sporting growth. The council must thoroughly examine this matter, take swift corrective action, and engage in</p>

							<p>transparent communication with the community regarding the issue. As a parent with two young children attending Callander Primary School, I would be greatly disheartened and disappointed in the Local Authority if there were no provisions made to include supplementary outdoor sports pitches in this project. Notably, the council has recently acquired land on site that could facilitate the required additional facilities. In light of this, it seems that the only reason not to, is financial, which is not a suitable reason for letting down the community of Callander and McLaren as a whole.</p>
--	--	--	--	--	--	--	---

Yes	Parent/Carer		Don't know/Not sure	Although a lovely setting currently, building does seem old and may no longer be fit for purpose.	Further from our house- we need a bridge from this end of town.	Minor concerns re proximity to the high school.	Significant concerns about loss of playing field/ 3G pitch which are an invaluable resource allowing kids to participate in sport locally. Plans MUST preserve these both during and following the move.
Yes	Parent/Carer		Don't know/Not sure	Traffic, access and parking	3G pitch provision	Missed opportunities to improve sports provision in the wider area	Traffic, access and parking are already an issue for both the McLaren High School and the McLaren Leisure Centre, and as far as I can see, the traffic, access and parking will be further stressed and diminished. The current 3G pitch at McLaren Leisure Centre, which is very popular but not suitable for all sports, will be temporarily removed and not improved - this is a huge missed opportunity and will be a detriment to all

							the sports clubs in the wider area.
Yes	Parent/Carer		Yes				Add a bridge from the bottom of Geisher road, over the river to the new school, for safe and easy access for the mass majority of children staying in all the housing schemes on north east of the village
Yes	Member of staff		Yes				Will be a great community campus , from nursery up to the high school.
Yes	Parent/Carer		Yes				We support the move however is it possible to just use the money to renovate the existing building?!
Yes	Parent/Carer		Yes				
Yes	Parent/Carer		Yes				An active travel plan is to be developed as mentioned in the Proposal Document (Paragraph 5.8.2).

							Under what timescales will this be developed and will its implementation be considered in line with construction of the new primary school?
Yes	Parent/Carer		Yes				The current school is at capacity and no longer fit for purpose. A school campus would benefit everyone in the community and eventually I hope it will include adult learning options. Also, sports facilities would be far more accessible to primary school children - and this is when exercise and well being can be positively promoted

Yes	Member of staff		No	Increase in noise causing negative implications to teaching and learning especially during exam times limiting future opportunities for higher education.	Increase in traffic, congestion and air pollution especially at busy times of day, increasing the safety risk of school pupils, staff and nursery attendees.	Decimation of the sporting facilities for not only the school but wider rural community	There is a continual erosion of the footprint of McLaren High school for high school pupils. McLaren has already given up its library for the nursery, it has also lost footprint for the new ASD unit that is taking over a large section of the ground floor where MHS pupils will be restricted to go into. Combine this with the increased demand on MHS' infrastructure for sports etc, MHS pupils are continually and consistently losing out. This will only lead to an amplification of issues that the high school will face, having a healthy school roll, but an ever reducing area of which pupils can rest and relax. The addition of the nursery has added a significant dynamic to
-----	-----------------	--	----	---	--	---	---

							<p>the high school fabric, creating a substantial amount of disturbance and noise, especially at exam times. This can not be lamed on the nursery children, but we as a high school still have to deal with the repercussions of this. Given that the primary's new location would mean it would need to be connected to the school would cause even more disruption at a very crucial time in all of McLaren's senior pupils lives. Removing a substantial amount of green space and sporting facilities in the build of the Primary in a time of increasing obesity rates in children is shocking. Having a secondary school without suitable, or appropriate provision</p>
--	--	--	--	--	--	--	---

							of sporting facilities is abysmal and sets the secondary school considerably apart from every other high school in Stirling. The addition of the primary school would only increase competition for very limited resources and facilities. We would lose the grass pitch, meaning an end to all rugby games and fixtures held at the school, it would have implications on running athletics and field events, we would lose a crowd funded multisport pitch having missed out on this on the redevelopment of the school in 2004 and there would be a considerable impact on the riparian habitat of the river Teith SAC.
Yes	Member of staff		Yes				

Yes	Parent/Carer		Yes				Outdoor sports facilities should remain available throughout the development including pitches for rugby, hockey, football.
Yes	Parent/Carer		Don't know/Not sure				
Yes	Parent/Carer		Yes				Consideration for sufficient parking must be thought of, currently the leisure centre car park is being used by leisure centre staff, customers, high school teaches and staff, high school drop off, nursery staff and kids drop off. This car park is literately small for the use just now and adding traffic from primary school staff and kid's drop off will make parking and drop off a lot more limited than what it already is.

Yes	Parent/Carer		No	Travel distance from the east end of Callander to the new proposed location.			Without a new bridge linking the east end of Callander to McLaren, a primary school in this area will mean long travel distances, so increased car use and increased traffic, which we should be avoiding. If a new bridge was to be built I would support this proposed move but without some improvement in connectivity, this new location seems poor.
Yes	Member of staff		Don't know/Not sure				The relocation of the nursery to the high school campus has caused some noise issues during school examination periods, for which nursery children cannot be blamed. The addition of primary children into the close proximity of the secondary school will add to this, so account should be included in the

							<p>planning provision of modifications to the exam period (both prelim and final exams) accommodations available to secondary pupils to minimise disruption, both during the construction and thereafter. In addition, the loss of green space in the school boundaries needs to be addressed, with proper provision of playing fields at least matching those available at other authority schools. This includes a full size multi-sport artificial surface and at least 1 full grass pitch for rugby/athletics etc. McLaren missed out on the provision of this facility in the original council refurbishment, having to fundraise to</p>
--	--	--	--	--	--	--	---

							provide these facilities independently. This cannot be permitted to happen in the course of this redevelopment.
No	Other (please specify)	Police Scotland	Yes				Police Scotland acknowledge that many of the considerations on this matter are not for Police comment. We would however make observations with regards to road safety and congestion and ask that any plans / changes to road infrastructure take consideration of pupil safety at drop off and pick up times, and also potential for congestion if three

							educational institutes locate within close proximity. We are also aware that buses are used for transportation of some pupils which add to pressure on surrounding roads.
Yes	Member of staff		Yes				
Yes	Parent/Carer		Yes				
Yes	Parent/Carer		Yes				Will there be disruption to the existing facilities at McLaren Leisure centre during the relocation/building phase? What are the plans for the existing 3G pitch at McLaren Leisure Center? Relocation would mean a prolonged disruption to the facilities available to the community (without a viable alternative). To layman eyes, this would also be a waste of money to relocate a pitch that is heavily used and in working

							order. How will parking and traffic be managed for the new facility. A bridge to connect the south end of Callander to the McLaren High School campus would really be required to reduce/manage traffic along Callander Main Street/Bridgend, encourage sustainable forms of transport, such as walking or cycling to school and provide a safer route to and from school or students/pupils.
Yes	Parent/Carer		Don't know/Not sure	Unsure if the hockey pitches will be removed in order to make space for the school	Unsure if the sports centre access would become the main school access and congestion during school hours would increase	Parking at the Maclaren Centre is already busy at certain points in the day	
Yes	Parent/Carer		No	The existing playing fields are irreplaceable	The existing site is more central for all	Concerned as to what would be	

				for the children		built on existing site	
Yes	Parent/Carer		Yes				
Yes	Parent/Carer		Yes				Needs to be done in conjunction with new footbridge at south end of Callander to allow for better access by foot
Yes	Parent/Carer		Yes				I am in favour of the relocation on the condition that suitable pedestrian and cycle access from town is provided as an intrinsic part of this development
Yes	Parent/Carer		Yes				Fully support any investment in education and the plans look great. Would be keen for assurances that high school students are not going to suffer through project build process - i.e. pitches will be relocated before vs after new school construction begins. High school students have had COVID to deal with

							and need stability in their learning.
Yes	Parent/Carer		Don't know/Not sure				
Yes	Parent/Carer		Yes				The relocation of the primary school is very much welcomed and well overdue. Pupils and staff deserve a more modern and technology friendly learning environment. A community campus will benefit all involved.
Yes	Parent/Carer		No	Why build a larger primary school when so many of the smaller rural schools are running with so few numbers. The council should be supporting the rural communities	Waste of tax payers money when there are so many other primary schools close enough to Calendar running under capacity	Yet more building on green fields why not use existing schools in the area	I am fully against the build of a new Primary school in the area. Not only is this costing money which would be better placed elsewhere. But the fact that parents are able to send their children anywhere in the council area is ridiculous. Stirling council are alienating rural communities (to

				and there schools.			which the majority of the area is rural) and there schools forcing closers, all be it the parents decision but very much forced by lack of council support. These big 'super schools' take away from an age old village way of life to which todays children will not understand due to councils forcing rural schools into decline. These comments may well fall on deff ears as the views of the constituents/residents of the the council area don't matter as Stirling council will do as they please anyway.
Yes	Parent/Carer		Yes				
Yes	Parent/Carer		Yes				
Yes	Parent/Carer		Yes				Please ensure decent car parking and a safe drop off zone for parents driving. To have all three education buildings

							plus the leisure centre in the one campus will bring in a lot of traffic. As a parent and resident in the local estate I want to ensure people aren't parking around the housing estate and causing unnecessary dangers for my family.
Yes	Other (please specify)	citizen	Yes				
Yes	Parent/Carer		Don't know/Not sure	Unsure about size of area	Think traffic control for the area could cause potential issues		The size would need to make it worth while for the long term. There would definitely need to be a new footbridge for people at the other side of Callander to be able to access. I am not sure what size of area would be left for the high school and leisure centre in terms of outside space and also for the primary school. I feel that it would be quite small.
Yes	Parent/Carer		Yes				I am concerned that locals and pupils will lose the artificial grass

							pitch and the high school playing field. Sports facilities must be relocated prior to closing/ removing those currently in place.
Yes	Parent/Carer		Yes				Yes- it makes so much sense to relocate . The primary school building is so old and it would be lovely for the children to have a new modern school. Not only does it make sense to keep all the Callander educational facilities in the one place , it will be much easier for parents dropping off and picking up multiple children. Also it will make children feel much more at ease moving up from nursery and primary to high school being already familiar with their surroundings .
Yes	Parent/Carer		Yes				
Yes	Parent/Carer		Yes				Cycle path imperative. Car parking.

Yes	Parent/Carer		No	The cost	Killin 0-2 nursery closing for money saving		If the council can't keep Killin 0-2 nursery open, where is the money coming from to build a school?
Yes	Parent/Carer		Yes				
Yes	Parent/Carer		Yes				With the new school, perhaps Stirling council might consider building a bridge over the Teith to the far east of Callander, to provide a safer walking and cycling route to all the schools.
Yes	Parent/Carer		Yes				Is there any plans to build a bridge from the far end of town to make it easier for people walking from the far end to get to and from school when walking
Yes	Parent/Carer		Don't know/Not sure	There are plans for more housing yet the size of the school doesn't allow for more children it is based on current	No bridge		I don't think enough consideration has gone into how children and families will access. High school, nursery and primary all together at the one side of town, thats alot of traffic.

							The size of school should have been larger than needed to accommodate the new houses that will be going into planning soon. We have purchased land near the top end of molland and will be hopefully putting houses in plus the plans for lots of houses at start of mollands. We will outgrow school before we even start.
Yes	Parent/Carer		Yes				
Yes	Parent/Carer		Yes				A concern is the lack of adequate parking currently which would be worsened unless a lot more were added into the plan.
Yes	Parent/Carer		Yes				I think it's an absolutely fantastic idea to build a fit for purpose primary school. With out ever growing school population a new school that is more adapted to the

							children's needs will support their learning and make the beginning years of their academic careers a positive experience.
Yes	Parent/Carer		Yes				
Yes	Young Person		No	To close to the high school, meaning young children as young as 5 will be seeing and hearing bad things. It's bad enough with the nursery being so close as there has been incidents with the nursery such as footballs being thrown into their playground and also the young children	Taking away the rugby pitch that many people use including the high school for sports day and many other activities.	High school and primary should be kept sperate for many reasons due to the great age gap between a primary 1 student and an s6. And the difference with playing needs at break and lunch.	What will the field being the primary school become as it cannot become a wasted space so if the school was to move there has to be something useful done with the old space. How does the leisure center feel about this decision I am sure they are not happy with losing the rugby pitch.

				picking up bad language.			
Yes	Other (please specify)	Local	Don't know/Not sure				
Yes	Parent/Carer		Yes				
Yes	Parent/Carer		Yes				Would be ideal if developers could incorporate another foot bridge across the river, because it's going to make the walk to school VERY long for those staying on the other side of town. A new bridge cutting across the river further up could slash that walk by 15-20 mins for some.
Yes	Parent/Carer		Don't know/Not sure				Would support the proposal if there was a definite committee to build a footbridge across the River at the Lagrannoch end of town
Yes	Parent/Carer		Yes				

Yes	Parent/Carer		Yes				<p>My children travel to this high school from aberfoyle but cannot participate in after school activities due to no public transport after school for them to use independently. This campus will provide extended opportunities and resources/ facilities for all so can public transport between aberfoyle and Callander be considered to help families travel to and from the leisure centre and schools throughout the day. Aberfoyle is connect by the X10 to balfron but Callander is our catchment and we visit callander daily for guides, brownies, cricket, rugby, swimming, climbing , school, astro sports etc etc my children aged 10-15 need to be able to make this</p>
-----	--------------	--	-----	--	--	--	---

							journey independently and aberfoyle / kinlochard /gartmore will only benefit from this new campus if transport links can be integrated and thought through properly.
No	Member of staff		No	This will reduce the footprint available to pupils and staff of McLaren High School			The space available to pupils is already quite small and the proposal's will reduce this. This will make things difficult for them at break and lunch times and could lead to behaviour issues.
Yes	Parent/Carer		Yes				
Yes	Member of staff		Yes				
Yes	Parent/Carer		Yes				I think that it is a positive move to have an education campus that the town can grow around.
Yes	Parent/Carer		Yes				
Yes	Parent/Carer		Don't know/Not sure	I have heard that the	It will only accommodate		

				children may lose some of the outdoor sports facilities.	20 more children than the current school. When I attended the consultation the lady said they hadn't projected children numbers for the future.		
Yes	Parent/Carer		Don't know/Not sure	Roads would be too busy.	Walking would become busy and may be intimidating for children walking alone when high school kids walking too.	Too far to walk in bad weather for those that do not drive	
Yes	Parent/Carer		No	Loss of full sized Astro pitch	Loss of athletics field	All detailed below	Whilst the relocation of the primary school to form a 'McLaren' campus in theory sounds perfect, it does come with additional problems. Namely the loss of a much used and needed resource within the McLaren

							cluster - the Astro pitch. Given this is the only facility available to pupils from within the catchment for McLaren, without travelling considerable distance, more consideration MUST be given to the design of the new school to include a pitch of the same size within the campus. There is precious little community space within Callander (and many many of the outlying villages) that this and the playfield are vital to good health and well-being of our young people.
Yes	Parent/Carer		Yes				Do it sooner and have parking for all patents!!!!!!
Yes	Member of staff		No	Facilities at McLaren High School already tight, taking away more footprint and facilities	Significant disruption to learning and teaching at McLaren High School while		

					build takes place		
Yes	Member of staff		Don't know/Not sure	Unsure of impact this would have on current McLaren staff in terms of interaction with Callander Primary, supervision of grounds, parking etc.			
Yes	Parent/Carer		Don't know/Not sure				
Yes	Parent/Carer		No	Primary school shouldn't be near high school			
Yes	Parent/Carer		Yes				It will be so much better for the children everything being all together.
Yes	Parent/Carer		No	It will take away space from the existing nursery and high school site, high school	The local community makes use of the outdoor space around the high school and leisure		

				outdoor space is already limited and would benefit from further development to encourage better and more diverse high school extracurricular activities	centre, to remove this limits community participation in activities.		
Yes	Parent/Carer		Yes				A new purpose built school is long overdue. The current facilities are not fit for purpose so fully support a new school.
Yes	Other (please specify)	Grandad	Yes				Can not come quick enough. Long overdue.
Yes	Parent/Carer		Yes				
Yes	Parent/Carer		Yes				
Yes	Parent/Carer		No	Only nine classrooms in the plan making it smaller!	Existing sports facilities, AstroTurf rugby, football, hockey, high school use . What is being put in place?	My child would have over a mile to walk to school everyday	

Yes	Parent/Carer		Yes				I am worried that the existing capacity outlined in the plans does not take into account the increase in the number of pupils which will arise when the proposed housing estate is built on the grounds around the Mollands farmhouse.
Yes	Member of staff		Yes				The proposal will most definitely be a positive outcome for all of the children and staff who will be in Callander Primary for session 2025 onwards. The old school building has many restraints in terms of lack of physical space and accessibility to name just 2. I hope that alongside the vision for the new campus will be the provision of a new footbridge across the river from the other end of the town.

Yes	Parent/Carer		Yes				
Yes	Parent/Carer		Yes				
Yes	Parent/Carer		Yes				Please make sure the school is bigger than it currently is, as opposed to the like for like current proposal.
Yes	Parent/Carer		Yes				
Yes	Parent/Carer		Yes				Please improve the pedestrian access to McLaren Campus at the same time as the new school is being built. The Creep and the river path must be made more accessible for all users.
Yes	Parent/Carer		Yes				Great idea!
Yes	Parent/Carer		Yes				

APPENDIX D - MCLAREN HIGH PARENT COUNCIL REPRESENTATION AND RESPONSE

McLaren Parent Council – Response to consultation on Stirling Council’s Educational Benefits Statement

I have submitted an online response to the consultation¹ however would like to attach various documents and so am e-mailing this full response. The comments are fundamentally being submitted as the Parent Council would like to ensure a voice is being heard with regard to the adequate provision of playing fields and specifically sports pitches at the new campus. The Parent Council is supportive of the move on the assumption of at least adequate provision.

We would define adequate provision as at very least the legislative minimum set out in the relevant legislation.

As well as school use for athletics, hockey, rugby, football and other sports, there are active community sports clubs and teams and also a community cricket club. All of these groups use and need sports pitches. In addition, the school and community lost the only local (public) tennis courts with the arrival of the artificial pitch (due to surface).

Recent correspondence with Stirling Council (SC) appears to confirm that the overall size of the campus meets the statutory minimum however doesn’t do so in terms of playing field provision. The previous correspondence is set out in two attached mails:

- NG’s e-mail to SC Councillors seeking confirmation that new campus would meet legislative minimum requirements dated 28/04/2023
- Cllr Maxwells response confirming shortfall in playing fields dated 22/06/2023.

Obviously, the above response post-dated the end of the previous consultation period. As raised in the mail to SC from April, the consultant speaking to the Parent Council early in the year did appear to be of the opinion that the legislation was ‘optional’ – this approach appears to have been taken forward into the final plans.

As the Parent Council understands the legislation, if statutory minimums are not to be adhered to then this needs to be approved by Scottish Ministers and the Council would need to make that case – the Ministers would need to be satisfied that provision was either “*impracticable or would be unreasonable to apply*”. Also, as quoted below, SportsScotland state: “*the Regulations, however, remain extant and Local Authorities must satisfy themselves that their provision complies in terms of the site area of the school, the total area of playing fields available...*”

Obviously the Parent Council, and we hope all stakeholders, want the best for the school, its pupils and the wider McLaren Community – meeting the statutory minimum would obviously help in this regard.

We hope to be in a position to support the planning application when it is submitted, but we would welcome an opportunity to discuss this matter further.

Also noted is that SC is required to undertake an ‘Equality and Social Economic Impact Assessment’ and it would be instructive to have sight of that document to look at its findings on the ongoing shortfall of playing field provision at McLaren.

¹ Done for ease through facebook account under my name Norman Gillan – also noted response was from PTA – this was incorrect and should have read Parent Council

Background

As some background, whilst the legislation dates from 1967, it is still extant, and the Scottish Government recently consulted on amending it and have decided not to. In that regard it can be seen as a very recent manifestation of Government thinking on school facilities and their provision.

Legislation: <https://www.legislation.gov.uk/uksi/1967/1199/made>

Legislation: <https://www.legislation.gov.uk/ukpga/1982/43/contents>

Recent consultation (and analysis): <https://www.gov.scot/publications/updating-school-premises-general-requirements-standards-scotland-regulations-1967-analysis/pages/2/>

Sportscotland say this about 'playing fields' (my emphasis):

*“Due to the cost and time spent transporting pupils off-site, **it is preferable to have all the playing fields within (or adjacent to) the school grounds**.....Ideally, numbers of playing fields and other outdoor facilities which are of a type and surface sufficient to accommodate the range of school needs (curricular, extra-curricular and informal use by pupils at breaks and lunchtime) should be provided at the school itself. **Where possible, the needs of community users should also be accommodated**. In this regard, it is important to identify what times of the year each activity will take place, the required hours per week of each activity, age of participants, standards of play, requirements for spectators and officials, use for both matches and training and so on, and any possible changes to these factors over time. Deciding playing field provision on this basis is preferable to simply following the approach taken in the Regulations. **The Regulations, however, remain extant and Local Authorities must satisfy themselves that their provision complies in terms of the site area of the school, the total area of playing fields available and indeed the remainder of the provisions of the Regulations.**”*

Sportscotland:

https://sportscotland.org.uk/documents/resources/ssc0100192amendedplayingfields_playingfields_web.pdf

Sportscotland:

<https://sportscotland.org.uk/documents/resources/secondaryschoolappendixii.pdf>

Excerpt from the minutes of the McLaren High School AGM, Monday 25 September 2023, 6pm

5a Primary School Relocation

Consultation Phase: All encouraged to look at the updated plans and to raise any concerns by 8th October.

It was noted that the build is scheduled to be complete by November 2025, however, several commented that this was unrealistic.

It was noted that there will be a significant operational impact for the school. The school are in discussion with the contractors to ensure that there will be minimal noise and disruption during key periods in the school calendar.

It was noted that the sports facilities will be affected from April 2024 for 30 weeks as the current 3G pitch is being moved – see plans for details. During this period the school sports facilities will be operating at a 50% capacity. This area is currently used by both pupils and community groups for a range of activities. The grass adjoining the old Callander Primary site will be used temporarily, however concerns have been raised as to its suitability for certain activities and the location prohibits it's use for 50min periods. Colleagues in the PE Dept are currently reviewing timetabling for this period. It was noted that provision for Nat 5 and Higher PE will be given priority. It was noted that pupils in the lower years may receive less sports provision; under the 2hrs per week recommended by the government.

Other concern was raised over the following issues;

- The plans detail moving the current 3G artificial pitch surface onto the grass area adjoining the McLaren Leisure car park. This ground is currently used by pupils and community for a range of activities as a rugby pitch and for athletics. This relocation is estimated to take 30 weeks and during that time 50% of the pitch will be available and none of the grass area. This is not acceptable provision.
- There is a grass area adjoining the old Callander Primary site but this is not suitable ground for some activities and will not prove usable in a 50min timetable period. This is not acceptable alternative provision.
- After build completion concerns were raised that there did not seem to be a like for like replacement of the 'rugby pitch' shown on the plans of the completed project. There is general amenity space shown but what is the definition of 'Amenity Space' : Are these areas fit for purpose as playing pitches?
- Impact of use of sports facilities results in the new allocation still being lower than the recommended statutory requirement we currently have if the facilities will now be shared between the High School and Primary School. It was noted that the current shortfall is 1.37, this will then be 0.34 but with potentially a higher usage. It was suggested that there should not be any shortfall; why would a project be approved that did not meet statutory minimum requirements for sports facilities?
- Traffic management, parking of this area.
- We should be lobbying for improved sports facilities considering the potential increased usage and the lack of other facilities in this rural area.
- What is the proposed plan for the old site of the primary school?
- How are the contractors planning to minimise the risk of the build running over time?
- Risk of flooding of new grounds/pitches

- If the sports grounds are to be shared between High School and Primary School, that means a reduction of provision. What solutions do the Council have planned for the ramifications of the pupils receiving less sports provision than recommended by the government?
- What are the plans for changing facilities at the temporary pitches?

Conclusion

The Parent Council would like it noted that they are strongly against this proposal as the project will considerably effect sports provision for the pupils and the community over a year and at the end of the build it seems that the provision for outdoor sports will still not meet the minimum statutory provision levels. Sport and physical activity are of foundational importance to this community and any new development should be a model of excellent provision. The school and the leisure centre serve a large geographical catchment and continuing with a plan that perpetuates a short fall of provision is unacceptable.

[Email thread received as an attachment to Parent Council's email consultation response]

Email 1

Dear Councillors

As I'm sure you are aware there is a current consultation underway for the proposed move to single campus for education in Callander. As Martin may remember from around 10 years ago, I have some interest in the provision of sporting facilities (especially pitches) at the local schools (and for community use) and so see the Community Campus as an excellent opportunity to address the current shortfall experienced by the McLaren pupils with regard to the provision of sports pitches. I don't see mention of the underlying legislation and the minimum statutory provision mentioned in the consultation documents and based on a parent Council meeting I attended, a consultant seemed to consider this as optional rather than statutory. Can I enquire therefore your understanding of the current proposals in the following regard:

- Are the proposals being taken forward based on the current legislation?
- Do you consider that the campus should have the minimum provision of sports pitches required by the legislation?

I think it would be very useful if the Council's current consultation included reference to the legislation and how the proposals seek to meet its requirements. If the requirements are not to be met it would be useful for the community to be aware of that and be allowed to have that discussion as well. For example, will the current primary school pitches count towards the sports pitch provision?

The consultation runs until the end of May and if you could get back to me before then that would be most useful to help inform my contribution to the consultation exercise.

Background

As some background, whilst the legislation dates from 1967, it is still extant, and the Scottish Government recently consulted on amending it and have decided not to. In that regard it can be seen as a very recent manifestation of Government thinking on school facilities and their provision.

Legislation: <https://www.legislation.gov.uk/uksi/1967/1199/made>

Legislation: <https://www.legislation.gov.uk/ukpga/1982/43/contents>

Recent consultation (and analysis): <https://www.gov.scot/publications/updating-school-premises-general-requirements-standards-scotland-regulations-1967-analysis/pages/2/>

Sportscotland say this about 'playing fields' (my emphasis):

“Due to the cost and time spent transporting pupils off-site, it is preferable to have all the playing fields within (or adjacent to) the school grounds.....Ideally, numbers of playing fields and other outdoor facilities which are of a type and surface sufficient to accommodate the range of school needs (curricular, extra-curricular and informal use by pupils at breaks and lunchtime) should be provided at the school itself. Where possible, the needs of community users should also be accommodated. In this regard, it is important to identify what times of the year each activity will take place, the required hours per week of each activity, age of participants, standards of play, requirements for spectators and officials, use for both matches and training and so on, and any possible changes to these factors over time. Deciding playing field provision on this basis is preferable to simply following the approach taken in the Regulations. The Regulations, however, remain extant and Local Authorities must satisfy themselves that their provision complies in terms of the site area of the school, the total area of playing fields available and indeed the remainder of the provisions of the Regulations.”

Sportscotland:

https://sportscotland.org.uk/documents/resources/ssc0100192amendedplayingfields_playingfields_web.pdf

Sportscotland:

<https://sportscotland.org.uk/documents/resources/secondaryschoolappendixii.pdf>

Thanks

Norman

Email 2

Subject: Playing field provision as part of plans for Callander McLaren Campus

Hello Team,

Can I request confirmation, with calculations, that the proposed final outcome of the plans for relocating the Primary School onto the McLaren campus, with additional land purchases, will meet or exceed the statutory requirement for playing fields ?

Many thanks,

Gene

Gene Maxwell

Councillor, Trossachs & Teith Ward

Stirling Council

Email 3

Subject: Response - Playing field provision as part of plans for Callander McLaren Campus - ref 101000726438

Dear Cllr Maxwell

Thank you for your enquiry. The project team continues to refine and develop the proposals for external grounds associated with the creation of a Campus for Callander, and therefore the information provided here is not necessarily the final proposal but reflects the current position.

The legislation that governs school site size in Scotland is the School Premises General Requirements and Standards Scotland Regulations 1967, as updated in 1973. This legislation makes no reference to any calculation of land required for

Campus sites. Definitions are not particularly clear either but we have taken legal advice on how to interpret the legislation with respect to school site and playing fields. Prior to lockdown, Scottish Government commenced a consultation on updating this legislation, seeking comments on a range of discussion points relating to quality of external space provision as the key driver rather than quantity. We are not currently aware as to when the outcome of this consultation or any update to legislation may be published.

The new land acquired by Stirling Council last year ensures full compliance with the regulations for provision of land for a primary school with a design capacity of 317 pupils and 12 ASN pupils, without reliance on the existing high school grounds. Overall we are required to provide 1.2 hectares of land for a primary school of this size, and the area we plan to develop specifically for the primary school and its playgrounds is 1.243 hectares. Within this the legislation identifies school site of 0.8 hectares (we will provide 0.843 hectares) and playing fields of 0.4 hectares, which will be provided in full as a mix of recreation space including the daily mile track within the fenced boundary of the primary school itself. We are working closely with the school and Education service to ensure that the grounds developed for the primary school allow for excellent opportunities for external learning and play with a range of different surfaces offering different educational experiences in line with national best practice. The primary school will also benefit from the wider Campus facilities including the all weather pitch and areas of grass and hardstanding/public realm (which are not included in the calculations given above)

The development of the Campus requires that the existing all-weather 3G pitch is moved south on the site to allow us to create a core central learning plaza for the Campus as well as extended car parking and drop off facilities. As well as moving the 3G we will also be replacing its surface, and any other improvements deemed necessary to extend its useful life and allow it to continue to support school and wider community sports activity. The 3G will be reprovided to the same size and specification as it is currently. While the current undersized rugby pitch will be removed from the site, the existing full sized rugby pitch at the old primary school will be retained as an education/community asset as well as the pavilion which we hope to refurbish to provide toilet, changing and storage facilities to allow this pitch to be better used both during the school day and after hours – we hope to work with the Rugby Club on this associated project. On the Campus site itself, the newly acquired land (Over and above what is needed for the primary school) will be developed to provide an area of flat grassed area that can be used flexibly for a range of school needs including athletics – we are continuing to discuss and refine this with the high school. The Campus grounds will also offer up other quality external spaces; areas of grass and hardstanding that aim to significantly improve the external environment for high school pupils and all Campus users.

A secondary school with a design capacity of 810 (McLaren HS) should be constructed with an overall school area of 5.6 hectares and within this, the legislation sets out 2.4 hectares of site area and 3.2 hectares of playing field area. McLaren HS roll is currently much lower than this with a peak roll in the next 10 year projection period (including allowance for buildout of all LDP housing development sites) of 676 pupils. This lower pupil roll would reduce the legislative minimum requirement to 4.4 hectares of school site – 2.0 hectares of school site and 2.4 hectares of playing fields. That said, we are assessing against the full 810 pupil design capacity.

The redeveloped high school/campus site, excluding the new primary school site, the nursery school site, car parks and other areas not for pupil play/sports and therefore

excluded from our calculation, will deliver a total of 5.753 hectares, which exceeds the minimum compliance for the design capacity of the high school (5.6 hectares). Within this the overall area to be provided as playing fields is currently proposed at 2.861 hectares with the remaining 2.892 hectares as site area (hardstanding/social etc). While the area for playing fields as currently calculated is 0.34 hectares under the requirement, this compares with the current/existing provision of 1.464 hectares of playing field, which is 1.736 hectares short of legislative compliance for playing fields. We are seeking to improve compliance in quantity terms but also importantly deliver improved quality spaces for the high school as part of the primary school relocation. The high school and we hope the other education settings on the site can greatly benefit also from the collocation with McLaren Leisure Centre which offers a wide range of facilities to enhance the PE curriculum delivery.

Regards

Geraldine

Geraldine Donald, Team Leader – Capital Project Delivery

Email 4

Norman, Martin,

A response on the playing field area issue, basically saying that the provision will meet minimum requirements for the school capacity.....just.

Gene

Gene Maxwell

Councillor, Trossachs & Teith Ward

Stirling Council

APPENDIX E – WRITTEN RESPENTATION AND RESPONSE

Sent: 19 September 2023 13:11
To: Aileen More
Subject: [External] Callander Primary

Hello Aileen,

Thank you for your time last night , I am sorry I had to leave early as I had hoped to clarify something with you in regards to the size of the school.

I understand from what was said the projected size allows for 22 more pupils than the current school. The existing school has 11 classes, the new school will have 9 classrooms with an option of a further 2 . Can I ask where these 2 classrooms are ? On the plan are they marked as something else eg GP rooms or breakout spaces ?As there is currently 11classes it seems likely they will be needed fairly soon.

As you will hopefully understand people are delighted about the new school and potential benefits but a recurring concern is that it will be too small , it would be good to be able to reassure people.

Kindest regards Elaine

Sent: 20 September 2023 08:37
To: [*respondent email address*]
Subject: FW: [External] Callander Primary

Dear Elaine,

Thank you for your email and thank you for attending the meeting. I hope you found what was shared helpful.

In response to your query, the plans are to build the new school with the capacity for 317 pupils. This will be designed as 11 classroom model with additional breakout spaces, therefore making the new building larger and more flexible than the current one. There is scope to build an additional 2 classrooms should capacity require this in the future. The ASN Provision is not included in these numbers.

I hope this answers your query however please feel free to contact me again or submit your comments through the Engage Stirling Platform.

Kind regards,
Aileen More

APPENDIX F - PUPIL REPONSES TO CONSULTATION

CALLANDER PRIMARY SCHOOL

Responses from a group of 6 Primary 5 pupils of Callander Primary School:

Do you support the proposal to relocate Callander Primary?

All children replied "Yes"

Are there any further comments?

"It will be great to have a new, modern building."

"I can't wait to have new classrooms and better spaces."

"Having a warm building in the winter will be great."

"It will be good to be with the nursery again and with the high school."

"It is exciting, I can't wait."



MCLAREN HIGH SCHOOL

Responses from McLaren High School's Pupil Leadership Team received from Depute Headteacher Mr Campbell:

- They are concerned about the lack of space during the construction work for PE and sport. With the rugby pitch being taken and the astroturf being moved they are very concerned about the lack of space for these areas.
- Linked to the above they were worried with access to the Leisure Centre and other potential shared facilities.
- They were worried about the lack of space at intervals and breaks as they have seen the impact with the nursery school already and how this has impacted the space we have available to us.
- They were wondering regarding fire alarms and the plans that would be in place for this with the changes to our current fire evacuation points.
- They would hope that intervals and lunch times would be at separate times to ensure appropriate space for all pupils involved.
- They feel the Primary School will add a community feeling to the school and that everything will be fine when the school is settled here and the pupils are on campus, it is just during the construction time there are a number of disadvantages to the Secondary School.
- They would have liked a proper pupil consultation opportunity.





Schools (Consultation) (Scotland) Act 2010

Report by Education Scotland addressing educational aspects of the proposal by Stirling Council to relocate Callander Primary School to a site adjacent to McLaren High School.

November 2023

Introduction

1.1 This report from Education Scotland has been prepared by His Majesty's Inspectors of Education (HM Inspectors) in accordance with the terms of the [Schools \(Consultation\) \(Scotland\) Act 2010](#) ("the 2010 Act"). The purpose of the report is to provide an independent and impartial consideration of Stirling Council's proposal to relocate Callander Primary School to a site adjacent to McLaren High School. Section 2 of the report sets out brief details of the consultation process. Section 3 of the report sets out HM Inspectors' consideration of the educational aspects of the proposal, including significant views expressed by consultees. Section 4 summarises HM Inspectors' overall view of the proposal. Upon receipt of this report, the Act requires the council to consider it and then prepare its final consultation report. The council's final consultation report should include this report and must contain an explanation of how, in finalising the proposal, it has reviewed the initial proposal, including a summary of points raised during the consultation process and the council's response to them. The council has to publish its final consultation report three weeks before it takes its final decision.

1.2 HM Inspectors considered:

- the likely effects of the proposal for children and young people of the school; any other users; children likely to become pupils within two years of the date of publication of the proposal paper;
- any other likely effects of the proposal;
- how the council intends to minimise or avoid any adverse effects that may arise from the proposal; and
- the educational benefits the council believes will result from implementation of the proposal, and the council's reasons for coming to these beliefs.

1.3 In preparing this report, HM Inspectors undertook the following activities:

- attendance at the public meeting held on 18 September 2023 in connection with the council's proposals;
- consideration of all relevant documentation provided by the council in relation to the proposal, specifically the educational benefits statement and related consultation documents, written and oral submissions from parents and others; and
- visits to the site of Callander Primary School and McLaren High School, including discussion with relevant consultees.

Consultation process

2.1 Stirling Council undertook the consultation on its proposal(s) with reference to the [Schools \(Consultation\) \(Scotland\) Act 2010](#).

2.2 The statutory consultation ran from 28 August to 11 October 2023. Copies of the consultation proposal were made available to statutory consultees. The

council engaged with statutory consultees through the Stirling Council Engage Platform, additional social media platforms, and by making paper copies available in the Callander public library.

2.3 A public meeting took place at Callander Primary School on 18 September 2023. Twenty-three stakeholders took part in this meeting. The council arranged consultation sessions with small groups of children from Callander Primary School and young people from McLaren High

School. All of the children from Callander Primary School who participated in the consultation session supported the proposal to relocate their school. Young people from McLaren High School raised a few concerns in relation to the proposal. This related to the potential impact of the primary school build on existing spaces and resources, as well as the suggested shared outdoors spaces contained in the proposal. They were particularly concerned about the impact to the delivery of physical education (PE). The council received 121 responses to an online questionnaire relating to the public consultation, in addition to two email responses from stakeholders. Seventy percent of these online responses were in favour of the proposal, 15% were against, and 15% indicated that they were not sure if they were in favour of the proposal.

Educational aspects of proposal

3.1 The council identify a number of problems impacting on the suitability of Callander Primary School. These include limitations to the space available, environmental and accessibility issues, and aging toilet and cloakroom facilities. The building is not well-designed or equipped to support children with additional support needs (ASN) who access the enhanced provision. The school's external grounds are inadequate for outdoor play and learning. The listed building status also present challenges to replacing the building in the current location.

3.2 The council has set out clearly a number of important educational benefits in its proposal paper. A new 2-18 education campus at the site of McLaren High School has the potential to improve the learning environment for children. Purpose-built classrooms and flexible teaching spaces could improve learner experiences significantly. The proposed new location could also help build further partnership working between the early learning and childcare, primary and secondary school. The council anticipate that this will enhance children's and young people's transitions, and provide opportunities to develop their skills for learning, life and work. The proposed school would offer an enhanced provision for children with ASN, with access to appropriate toilet and changing facilities, and improved access to outdoor spaces. Staff and parents recognise this has the potential to improve children's daily transitions and the quality of support they receive.

3.3 All of the children and young people, staff and parents who met with HM Inspectors welcomed the improved facilities offered by the proposal. Children look forward to accessing better sports facilities and specialist areas for art and music. Teachers see the potential to take more creative approaches to learning and teaching in a modern

setting. This includes increased group work and collaborative projects with children and young people from across the campus.

3.4 Young people and staff from McLaren High School who met with HM Inspectors would like further information and consultation in relation to aspects of the proposal. These include the transition arrangements during the school build and the repurposing of green space to replace land currently used for PE. A few parents and staff expressed concern about the potential increase in road traffic around the campus and the ongoing need for improved infrastructure to support safe walking routes to school. Parents also questioned whether the capacity of the new building would be sufficient to meet the demands of recent housing developments in the area. Young people and children who met with HM Inspectors would like more opportunities to contribute their ideas for the development of the plans for the new campus.

Summary

HM Inspectors agree that Stirling Council's proposal to establish a new primary school has clear potential educational benefits. The proposal addresses accommodation pressures due to the age of the current building. Children attending the new Callander Primary School will benefit from a modern, improved learning environment. The new school will help to promote creative and engaging teaching approaches and offer facilities that better support children's wellbeing and access to outdoor learning. In taking forward the proposal, the council should provide further reassurance that the new school meets the demands of the local community in terms of roll capacity. They should consult further with young people and staff in relation to the transition period and repurposed green spaces. The council should continue to engage with stakeholders to ensure all children and young people can confidently access safe walking routes to the new campus. Finally, the council should consider how ongoing engagement and communication with key stakeholders ensures that all feel included and informed in the next stages of development.

**HM Inspectors
November 2023**